



# Providing Cadastral ties to ParcelMap BC Operations and Spatial Improvements

**Bryan Sawers, Manager of Parcel Fabric Operations**

**Sean Lyons, Parcel Fabric Technician**

*November 22<sup>nd</sup>, 2019*

# Agenda

1. Overview of Spatial Improvements in PMBC
2. Spatial Improvements webmap and Prioritization
3. Ingesting CAD Ties from Local Governments into PMBC
4. Demonstration
5. Questions / Feedback

# Spatial Improvements in ParcelMap BC

## What are Spatial Improvements – and Why?

### Delivering on Trusted & Continual Improvement:

Improvements to both relative & absolute positioning of the survey parcels in ParcelMap BC

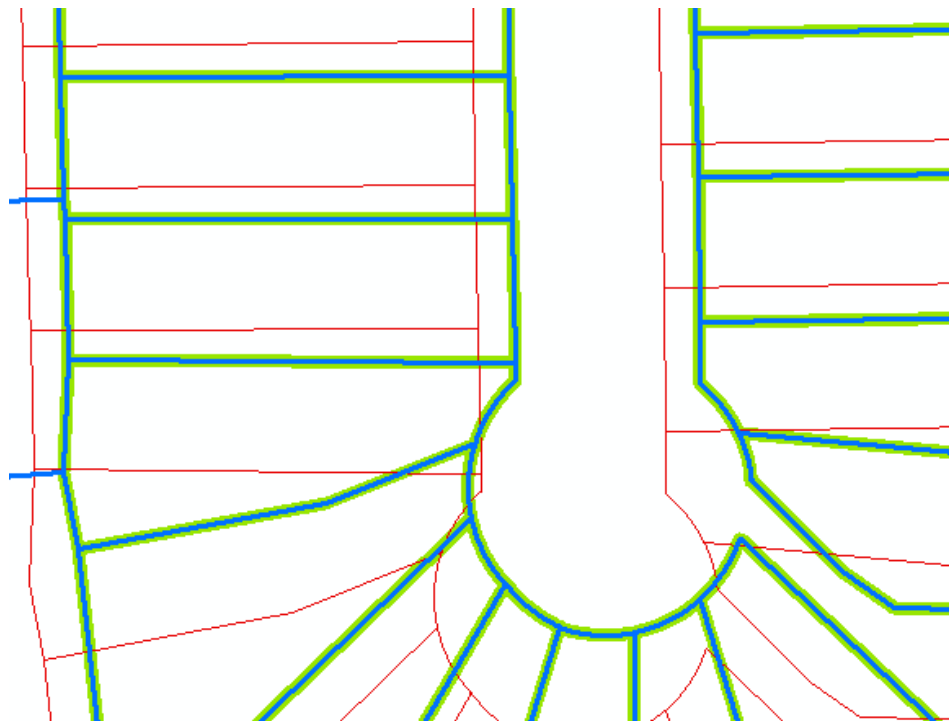
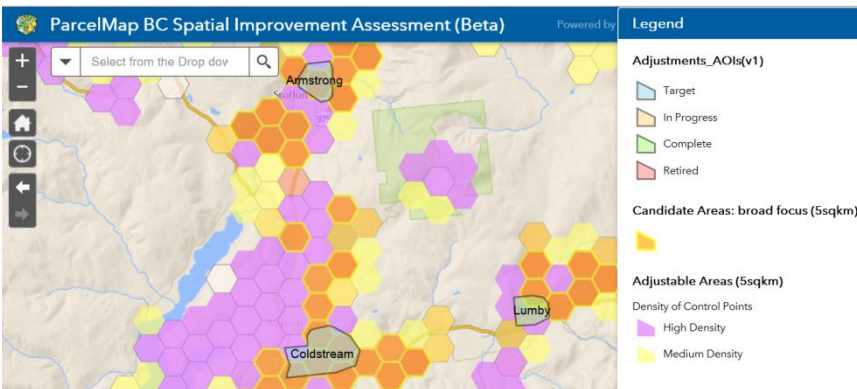
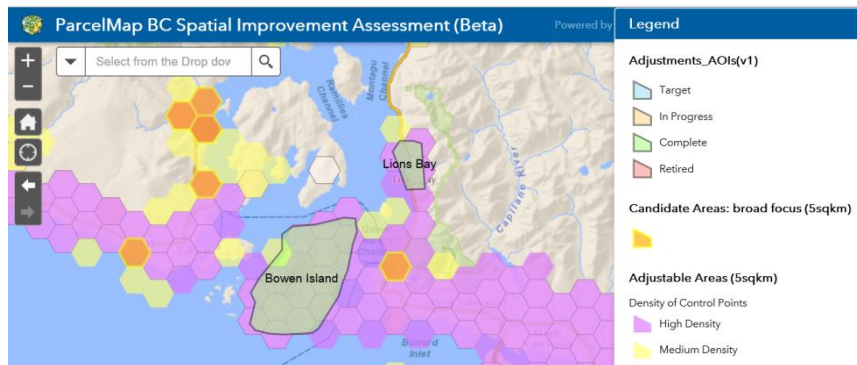
Team has defined processes & tools available, including:

- **Least Squares Adjustment (LSA):**  
Rigorous full survey network adjustment of both relative and absolute position
- **Spatial Transformation (multivariate):**  
Comparatively simple and only improves absolute positioning, not relative accuracy
- **Data recompilation:**  
Improves only relative positioning and fixes poor shapes due to “messy” data

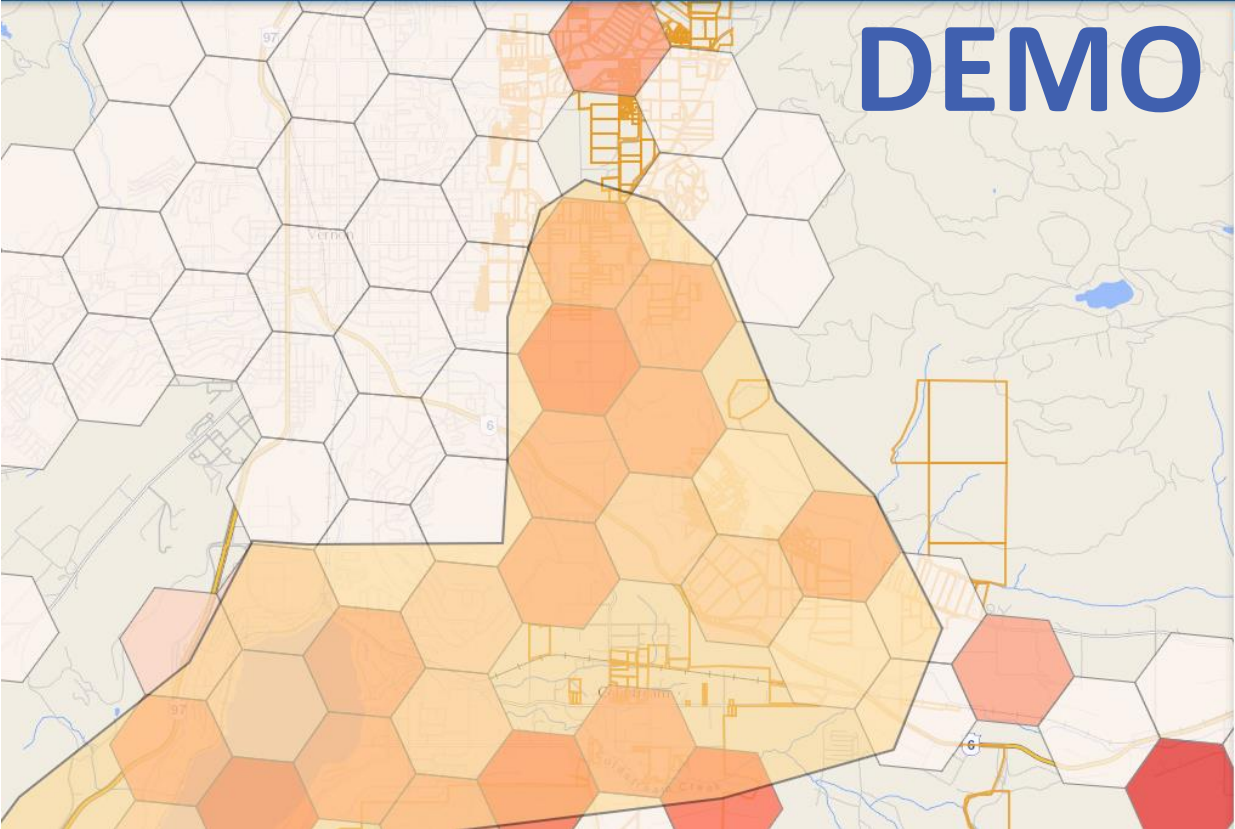
Which approach is used – and whether the area is even ready for an adjustment – will be based on an objective assessment...

# Parcel Fabric Spatial Improvements

Fabric Operations is currently using the [Spatial Adjustment Webmap](#) to define Areas of Interest for targeted adjustments.



# DEMO



## Legend

### Areas of Interest

- Target
- In Progress
- Complete
- Retired

### Areas in Need of Adjustment: 1 km<sup>2</sup> hexagons

Median Distance to Control (m)

- ≤140
- ≤35
- ≤25
- ≤15
- ≤10
- ≤5
- ≤1

### ParcelMap BC Parcel Fabric





## Questions / Feedback

Bryan Sawers, Manager of Parcel Fabric Operations

- Sean Lyons, Parcel Fabric Technician