



ParcelMap BC Adoption Working Group

Workshop #1

September 19th 2018

10:30 am to 2:00 pm

Victoria & Vancouver

Brian Greening

AWG Chair

Director, ParcelMap BC Operations, LTSA

Ann Archibald

AWG Vice-Chair

Executive Director, ICI Society

Agenda

Welcome / Opening Remarks	10:30 am
Adoption Working Group (AWG) Housekeeping <ul style="list-style-type: none"> Terms of Reference: Feedback & Finalization Travel Justification Template: Draft 	10:35 am
AWG Collaboration Portal: Introduction	10:40 am
ParcelMap BC Status Update <ul style="list-style-type: none"> LTSA Fabric Operations (FabOps): Current Stats ParcelMap BC Adoption Uptake: Progress Stats 	10:50 am
Working Session #1: 3 rd Party Data Alignment Dependencies (Homework Survey #1) <ul style="list-style-type: none"> Summary of responses Local breakout discussion sessions Review of discussion outcomes and actions 	11:00 am
Lunch	12:00 pm
Working Session #2: Spatial Improvements in ParcelMap BC – What, Why & When? <ul style="list-style-type: none"> Overview & Status Local breakout discussion sessions Review of discussion outcomes and actions 	12:30 pm
Future Workshops <ul style="list-style-type: none"> Workshop Cadence & Date for Workshop #2 Workshop #2 Topics – Group Input 	1:30 pm
Open Questions, Feedback & Wrap-Up	1:45 pm

Welcome

- What:** Welcome to the first in a series of ParcelMap BC Adoption Working Group (AWG) workshops
- Why:** To facilitate addressing business hurdles and technical challenges identified as barriers to successfully adopting ParcelMap BC
- When:** These in-person sessions will be regularly scheduled with AWG Participants
- How:** Each workshop will run concurrently in Vancouver and Victoria with agenda based on input from “homework” and/or prior workshop outcomes

Housekeeping

Terms of Reference: Feedback & Finalization

Travel Justification Template: Draft

AWG Collaboration Portal: Introduction

- What:** The [AWG Collaboration Portal](#) is a web based collaboration tool (from [Basecamp](#)) for all AWG members and will become the primary communication channel
- Why:** The portal gives all members access to a calendar, meeting notes, important documents, and a place to share ideas
- When:** Invitations to all AWG members will be sent out immediately following today's session!
- How:** We will walk you through a brief demo of the portal but a tutorial of the basics is also available [here](#)

ParcelMap BC Status Update:

ParcelMap BC Operations (FabOps): Current Stats

ParcelMap BC Adoption Uptake: Progress Stats

ParcelMap BC Ops: Current Stats

Operational Excellence: Current and Complete

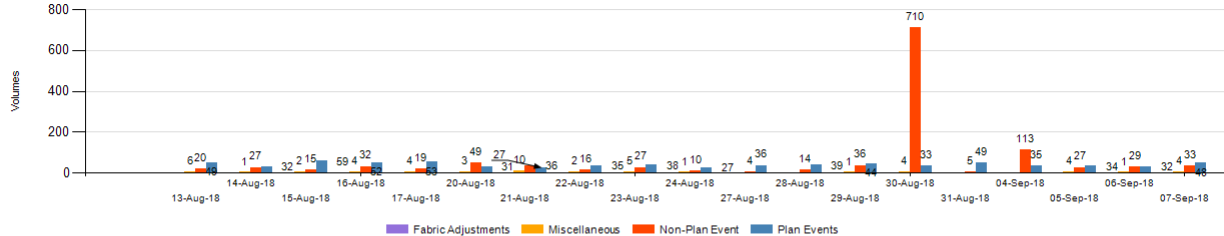
- Less than 2 day turnaround Province-wide (Plan Updates)
- Over 2000 work item packages processed per month

Fabric Operations

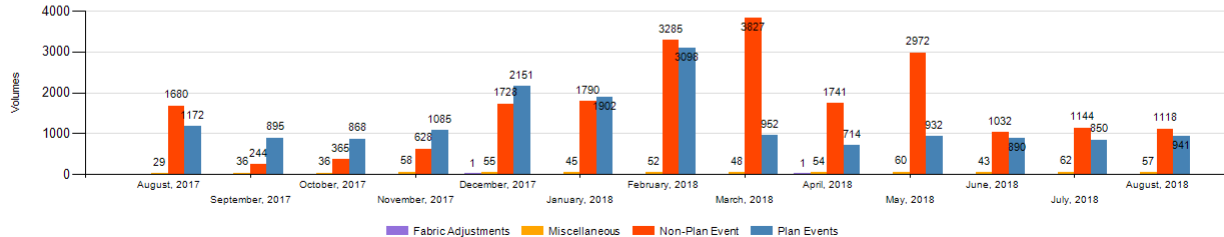
2018-09-07	New	Completed	Backlog	Daily Turnaround (days)	YTD Turnaround (days)
Plan/Dataset*	23	48	22	0.98	1.18
Non-Plan**	186	33	1,080		
Improvement / Misc.	2	4	33		
Defected and On Hold	5		13		
Overdue Plan / Blocked			9		

* not defect/overdue
** no AFB Conv.

Workitem Completed Volumes - Last 30 days



Workitem Completed Volumes - Previous 13 months



Quick Stats:

Monthly Norms:

- 900 New Plan Integrations
- 1200 Non-plan Updates
- 40 Compilation Data Fixes
- 1-2 Spatial Improvements...

ParcelMap BC Ops: Current Stats

Trusted & Continual Improvement

Control Point Improvements:

Improve “weakly positioned” Municipal Integrated Survey Areas (ISAs)

- Elkford, Granisle, Tumbler Ridge, Mackenzie, Vernon, Cranbrook & Powell River *In Progress*
- Prince George, Dawson Creek, Kamloops & Logan Lake (RFQ Closed Aug 31st) *Reviewing Responses*

Incorporate local cadastral tie programs

- Bowen Island Municipality (Civic Spatial Grant) *Completed in Operations*

Other Enhancements:

- Integration of “historic” Crown SRWs *Underway in Operations*
- Capture recently converted Absolute Fee Book titles *Underway in Operations*
- Highways & Roads Tenure Inventory *Discovery Phase*
- Pre-Registration Parcels in ParcelMap BC *Discovery Phase*

Adoption Uptake: Progress Stats

PMBC ADOPTION STATUS

ParcelMapBC

CERTIFICATE OF RECOGNITION

This is to certify that the Land Title and Survey Authority of BC and the Integrated Cadastral Information Society recognize that as of January 24, 2018

Resort Municipality of Whistler

has declared ParcelMap BC is being used as the authoritative cadastral parcel fabric representation in BC, spatially and for attribution by RMOW.

The LTSA and ICI Society thank you for adopting ParcelMap BC as a key piece of data infrastructure supporting economic and social development in the province.



Connie Fair

Connie Fair
CHIEF EXECUTIVE OFFICER, LTSA



Ann Archibald

Ann Archibald
EXECUTIVE DIRECTOR, ICI SOCIETY

A majority of Local Governments are now utilizing ParcelMap BC

- 111 jurisdictions currently consuming ParcelMap BC
- Whistler and Kimberley have now formally adopted ParcelMap BC

The ICI Society team continues to work with remaining jurisdictions to provide ParcelMap BC for analysis, alignment and adoption.



innovation. | integrity. | trust.

Working Session #1:

3rd Party Data Alignment Dependencies (Homework Survey #1)

Summary of survey responses (10 minutes)

Local breakout discussion sessions (35 minutes)

Review of discussion outcomes and actions (15 minutes)

Working Session #1:

3rd Party Data Alignment Dependencies

Datasets used

	ICF	BC Assessment	ALR	ICI Cadastre	Tempest	Tantalus	AddressBC	PMBC	ITN
Local Governments	✓✓	✓✓	✓	✓✓✓	✓	✓	✓	✓✓	
Provincial Governments	✓			✓		✓			✓
Utilities	✓✓	✓		✓✓		✓	✓		

3rd Party Data Alignment Dependencies

Local Group Breakout Discussion:

(40 Minutes)

Points for discussion:

1. Data dependencies in your organization:
 - *Which are mission critical?*
 - *Is there a priority order?*
2. How do you currently maintain data alignment (spatial & attributes)?
3. Do some datasets have different alignment requirements than others (spatial & attributes)?
4. How do these affect your timeline for adoption?
5. Other Feedback & Questions?

3rd Party Data Alignment Dependencies

Review of discussion outcomes and actions:

(15 Minutes)

- Victoria - Findings & Feedback
- Vancouver - Findings & Feedback
- Open Discussion & Next Steps...
 - Prioritize the common challenges

Lunch

(30 minutes)

Working Session #2:

Spatial Improvements in ParcelMap BC: What, Why & When?

Overview & Status

(25 minutes)

Local breakout discussion sessions

(20 minutes)

Review of discussion outcomes and actions

(15 minutes)

Spatial Improvements in ParcelMap BC

What are Spatial Improvements – and Why?

Delivering on Trusted & Continual Improvement:

Improvements to both relative & absolute positioning of the survey parcels in ParcelMap BC

Team has defined processes & tools available, including:

- **Least Squares Adjustment (LSA):**
Rigorous full survey network adjustment of both relative and absolute position
- **Spatial Transformation (multivariate):**
Comparatively simple and only improves absolute positioning, not relative accuracy
- **Data recompilation:**
Improves only relative positioning and fixes poor shapes due to “messy” data

Which approach is used – and whether the area is even ready for an adjustment – will be based on an objective assessment...

innovation. | integrity. | trust.

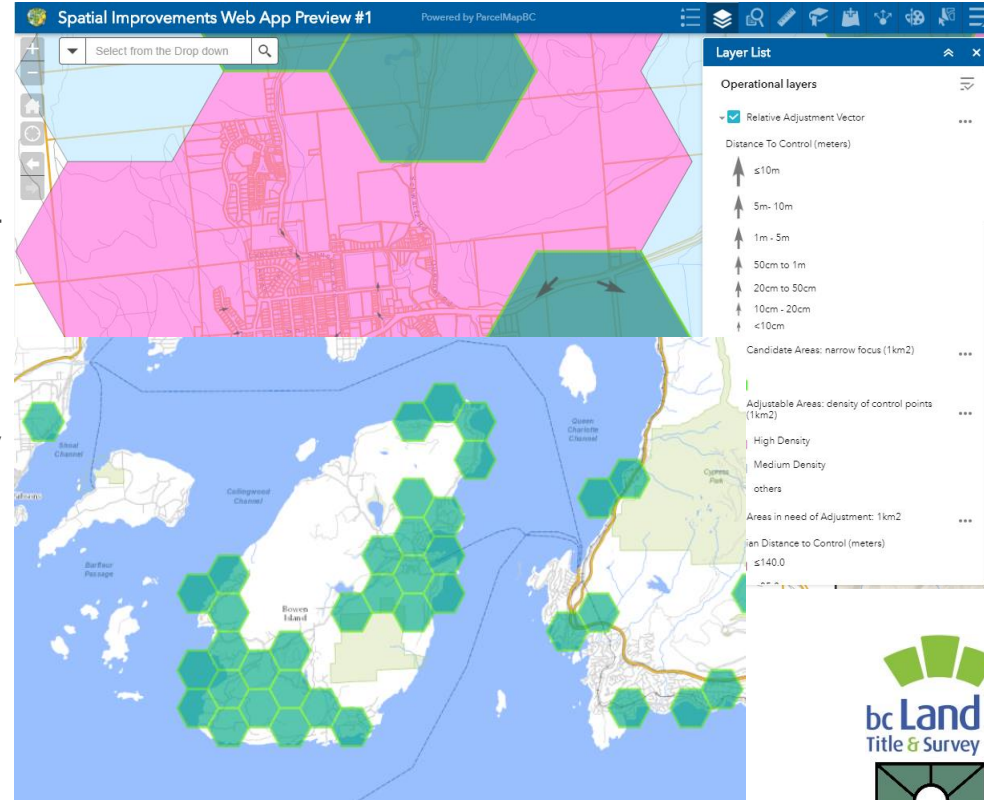


Spatial Improvements in ParcelMap BC

Plan & Deliver Spatial Improvements:

Quality Assessment & Adjustment Readiness

- Criteria based assessment of the fabric province-wide (monthly)
 - Spatial Accuracy Quality Assessment
 - Readiness for Spatial Improvements
- Guides large area Spatial Improvements work by FabOps (target 1-2 per month)
- Completed Adjustments:
 - Village of Lumby
 - Bowen Island Municipality
- Web App for transparency! (Beta -- [Demo](#))

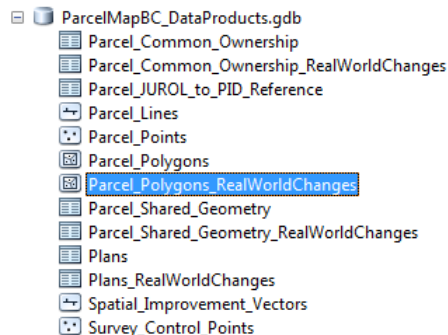


Spatial Improvements in ParcelMap BC

Get Spatial Improvement Results:

Spatial Improvement Vectors:

- Used to describe improvements delivered in ParcelMap BC Parcels (polygons, lines & points)
- “From-To” line features tied to Parcel Points by ID included in ParcelMap BC Extracts
 - Describes how the points have moved!
- Temporal: Request your “from” date
- ICI Society Members: Request them in your GeoShare package
- ParcelMap Direct users: Say “Yes” to “fabricSpatialImprovements”



Parcel Points - Estimated Error @95%

- ✱ < 20cm
- ✱ 20cm - 1m
- ✱ 1m - 5m
- ✱ > 5m

Survey Control

- ▲ GEODETTIC, GOOD
- ▲ GEODETTIC, ANOMALOUS
- ▲ GEODETTIC, DESTROYED
- ▲ SURVEY
- △ OTHER

Spatial Improvements in ParcelMap BC

Local Group Breakout Discussion:

(20 Minutes)

Points for discussion:

1. Spatial Improvements in your organization:
 - *What are the advantages?*
 - *What are the challenges?*
2. Do you see the Spatial Improvement Vectors product being helpful?
3. Feedback on the Quality Assessment & Adjustment Readiness App?
4. Are there other data products / tools that could help?
5. Other Feedback & Questions?

Spatial Improvements in ParcelMap BC

Review of Discussion Outcomes and Actions:

- Vancouver Findings & Feedback
- Victoria Findings & Feedback
- Open Discussion & Next Steps...
 - Prioritize the common challenges

Future Workshops

Workshop Cadence:

Date for Workshop #2 & beyond...

Workshop #2 Topics:

Group Input / Thoughts

Wrap-Up

Group Feedback?

Open Questions?

Next Steps...