

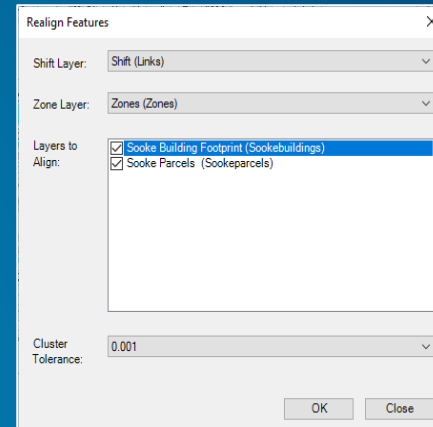
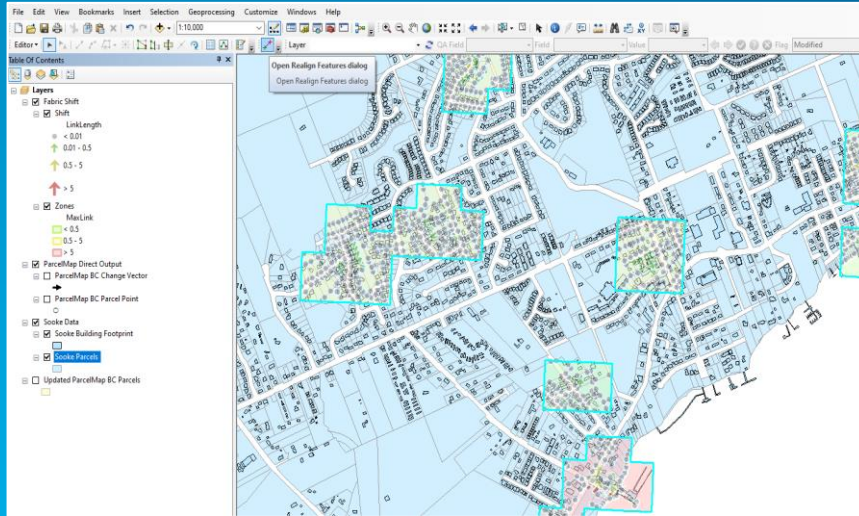
ParcelMap BC AWG Workshop

Myron Doherty, Dave Horwood, Sarah Sibbett, Dave Gariepy



Team Alignment Update

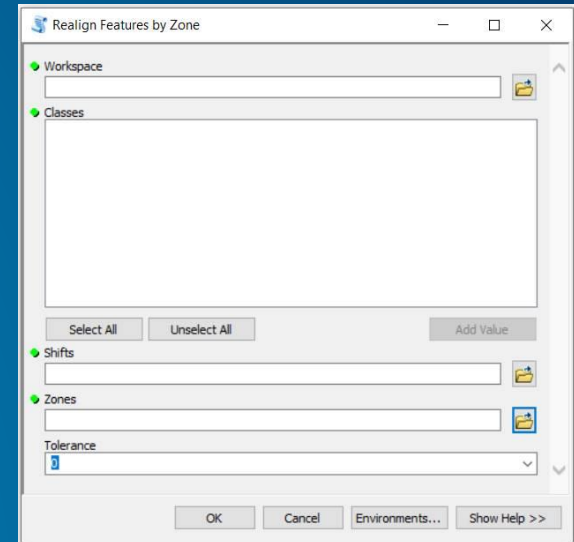
- Automating ongoing alignment
 - Currently, ongoing alignment must be run manually within ArcMap using the 'Realign Features' Add-In



- The ability to automate this process so it can be executed via a script outside of ArcMap is *under development*

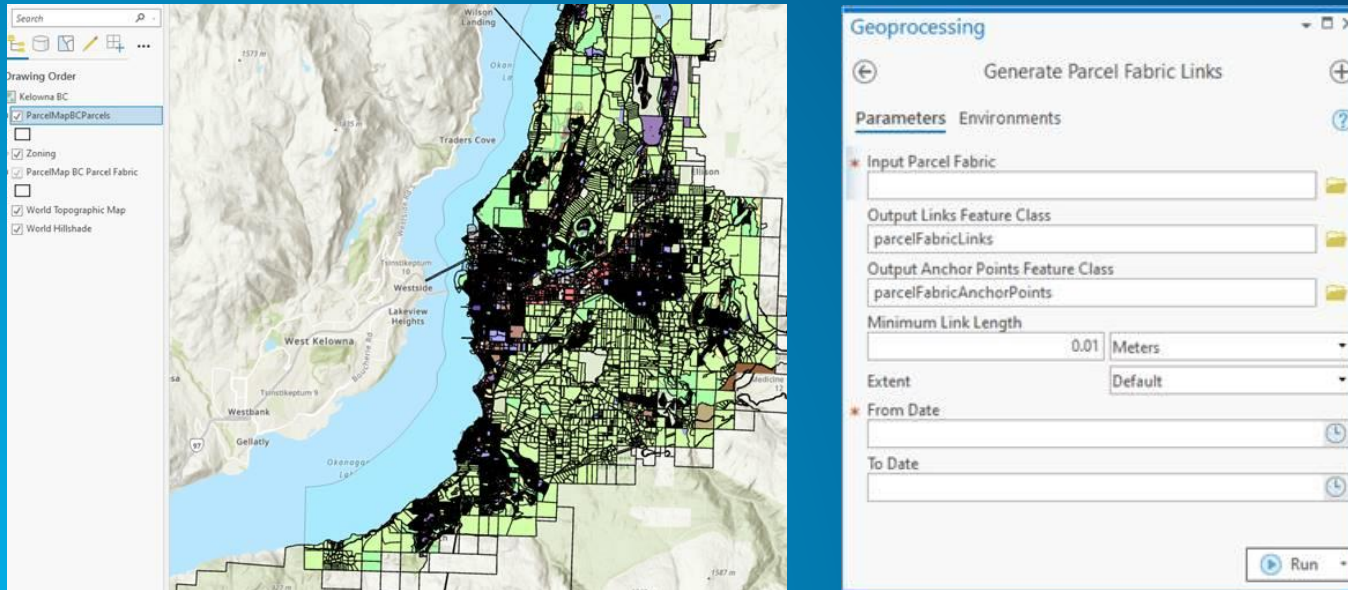
Team Alignment Update

- There are two tools we are currently developing:
 - **Realign All Features**
 - All ongoing alignment links are applied to the data
 - **Realign Features By Zone**
 - Ongoing alignment links are applied zone by zone (based on the current selection)
- Since these tools use python, there should be no reason this could not be converted to Pro



Team Alignment Update

- Additionally, Esri Inc. is expecting to release an out of the box method for ongoing alignment in a later release of Pro



- A demonstration of the coming functionality is available [here](#)

Implementation Partner Update: Canada Lands

- A new Canada Lands Parcel Mapping feature service is publicly available [here](#)
- This is a live service currently being updated on demand, soon to be weekly

Canada Lands Parcel Mapping Data



Parcel mapping data for specified Canada Lands presented as a seamless national service.

Feature Layer by [admin_canadacadastral](#)

Created: Jun 12, 2020 Updated: Aug 5, 2020 View Count: 704

[Living Atlas](#)

Description

Natural Resources Canada (NRCan) maintains the "Canada Lands Digital Cadastral Data", which covers:

- Yukon
- Northwest Territories
- Nunavut
- Over 2600 Indian Reserves
- Canada's National and Historic Parks

This service, updated weekly, aggregates hundreds of individual Canada Lands mapping files into a seamless national parcel mapping feature service.

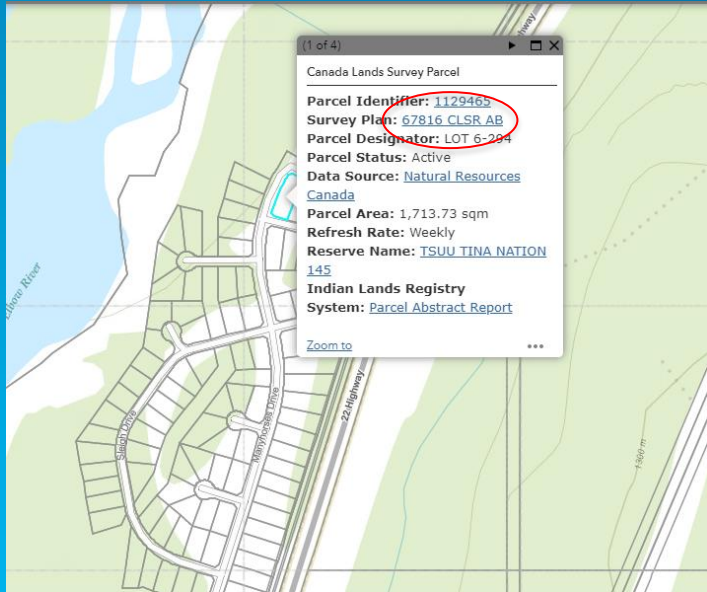
Canada Lands parcel mapping is a significant achievement by NRCan and constitutes a major contribution to Canada's overall land information infrastructure. Canada Lands parcel mapping is continuously maintained by NRCan using modern parcel mapping techniques.

The Canada Lands parcel mapping data maintained by NRCan offers attribution that provides valuable content for each of the parcel boundaries. This includes information such as:

- A parcel identifier that links to the [Electronic Registry Index Plan](#)
- A survey plan number that links to the [survey plan details](#)

Implementation Partner Update: Canada Lands

- Pop-ups for the feature service are pre-configured and include hyperlinks to various authoritative sites

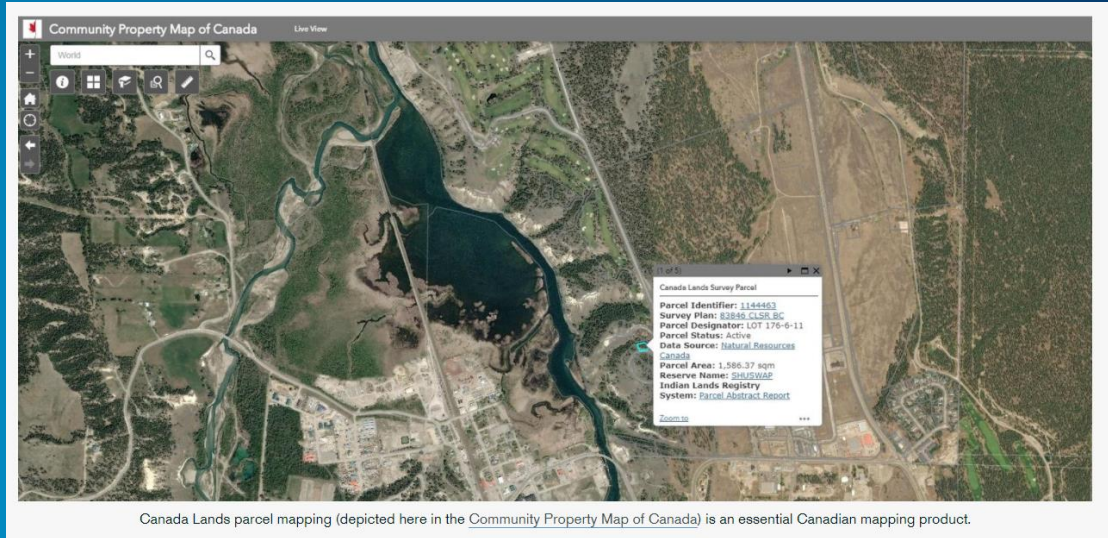


A screenshot of the "Survey Plan Details" web application interface. The header includes the Government of Canada logo and a search bar. The main content area displays the following details:

Survey Plan Details	
Plan Number	67816 CLSR AB
Title	LOTS 6-259 TO 6-357 & RD. IN SECS. 28 & 33, TP. 23, R. 4, W5M (eng: CAN)
Description	
Surveyor	NICHOL, S.H. ()
Canada Lands	TSUU T'INA NATION 145 (06639)
Date Surveyed	1981-01-01
Date Entered	2002-07-18
Project Number	

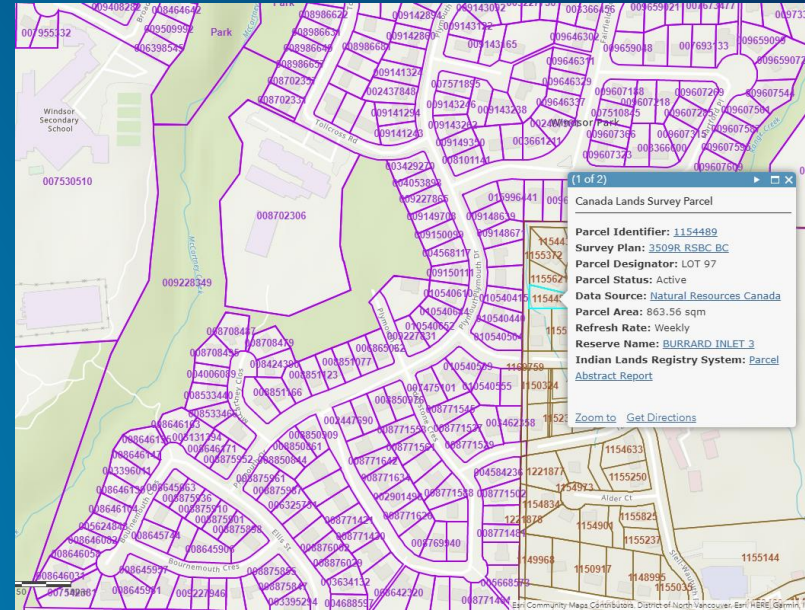
Implementation Partner Update: Canada Lands

- The Canada Lands Parcel Mapping feature service can be accessed in a variety of ways, including:
 - [The Community Map of Canada Basemap](#)
 - [The Community Property Map of Canada](#)
 - ArcGIS Pro
 - [The Living Atlas](#)
 - ArcGIS Online



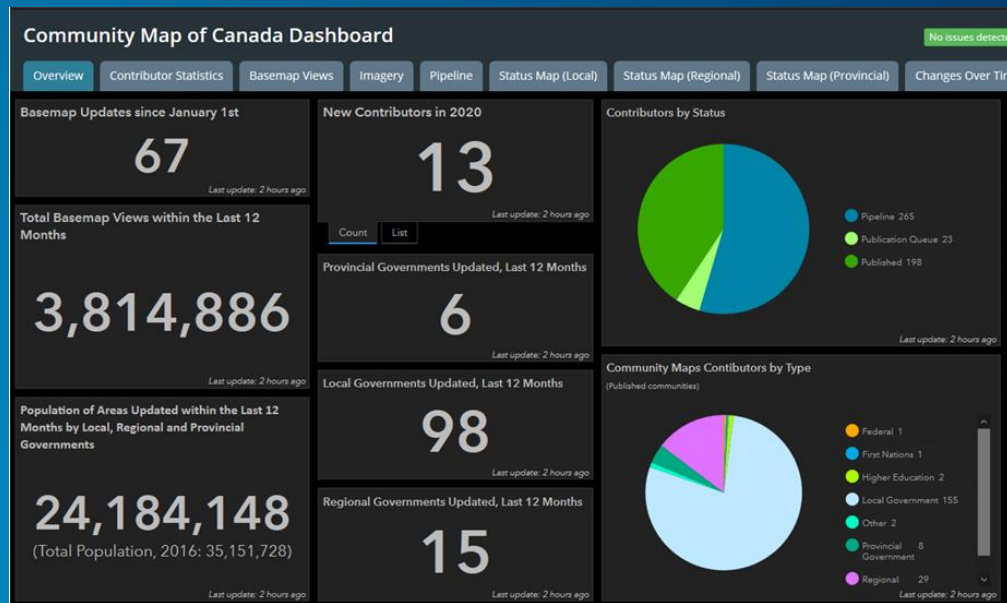
Implementation Partner Update: Canada Lands

- In the future, it is envisioned that increased usage of Canada Lands Mapping will enable continuous improvements to this mapping
- As inter-agency collaboration becomes more feasible, it will be possible for provincial mapping organizations and NRCan to collaborate in making their respective mapping products connect and fit well with each other in a seamless fashion



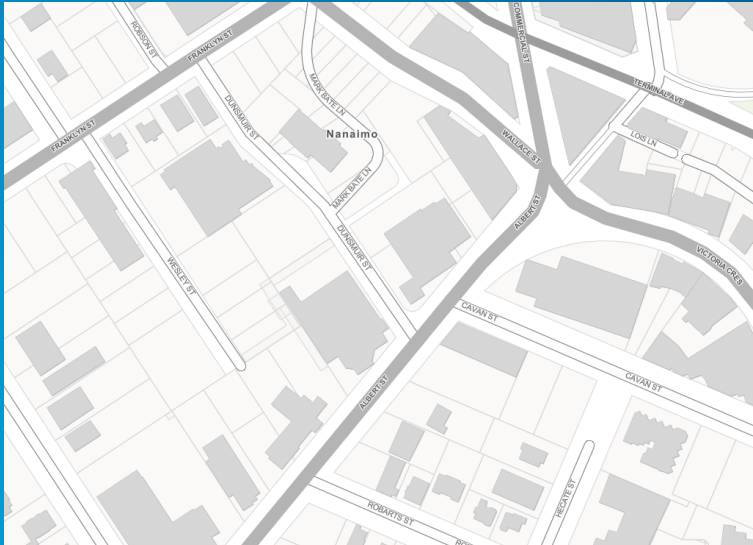
Implementation Partner Update: Community Map

- The Community Map of Canada is a basemap of Canada built from authoritative data and updated daily
- The Community Map of Canada is widely used among our customers, with over 20 million views each month



Implementation Partner Update: Community Map

- ParcelMap BC parcel boundaries are now available in the Community Map of Canada basemap, making the Community Map of Canada another way in which to access ParcelMap BC



Implementation Partner Update: Community Map

- Information on how to access the Community Map of Canada basemap can be found in this [blog post](#)

