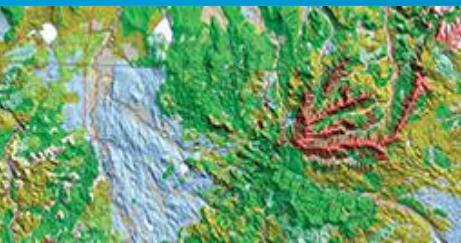


ParcelMap BC AWG Workshop

Session #12: Data Alignment Workflows Test Lab – Project Update

Dave Gariepy, Myron Doherty



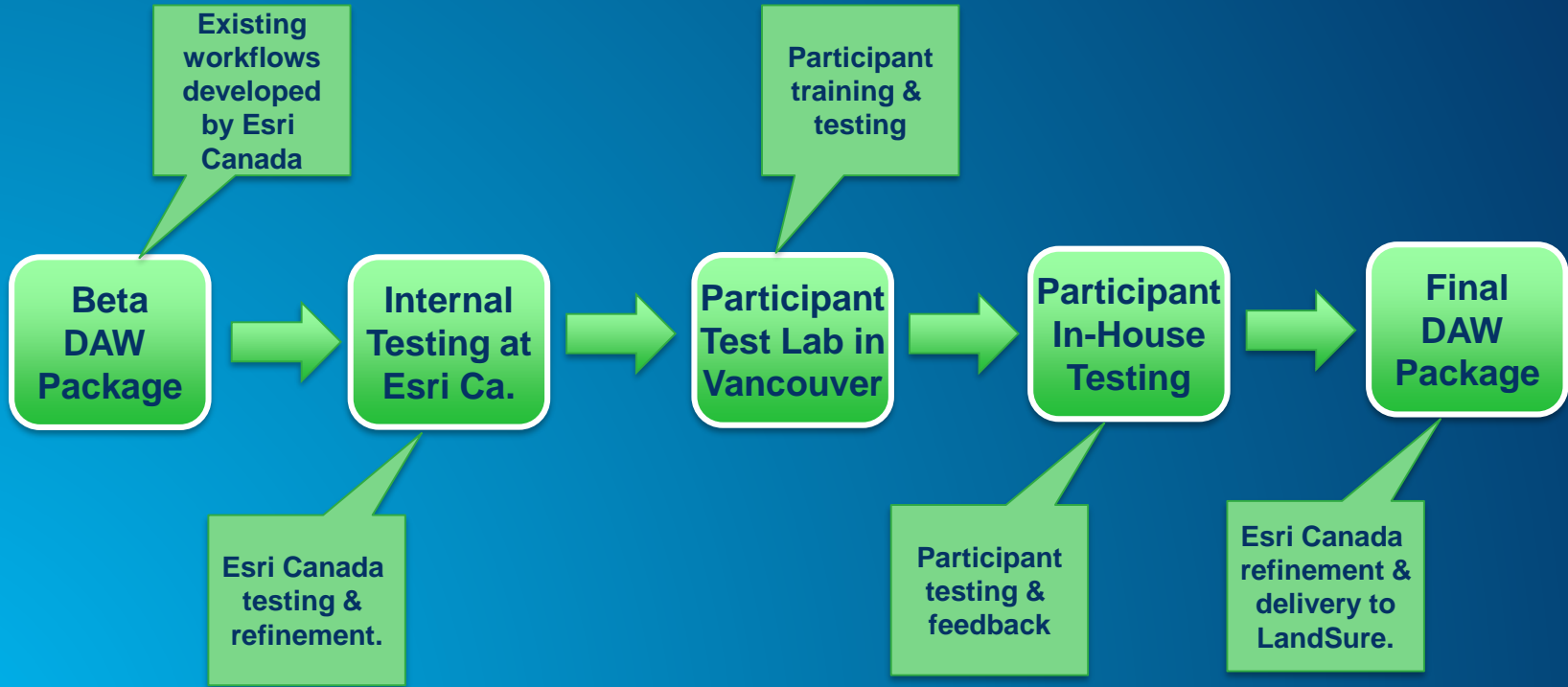
Presenters

- **Myron Doherty, Director Pacific Region**
- **Dave Gariepy, Director, Land Information Solutions**

Project Background


- **Initial & on-going alignment challenges**
- **Esri Canada has developed Data Alignment Workflows (“DAW”) to help address these challenges**
- **These workflows have been tested internally but need further “real world” testing, validation & refinement:**
 - **Test with real data sets – internal and end-user testing**
 - **Refinements based upon testing results**
- **Goal is to make workflows available to PMBC Adoption community at no cost to end users**

Test Lab Project Approach




Project Milestones

1) Project Kick-off and Esri Canada Test Environment set-up.
(September/October) Status: Completed



2) Initial Beta DAW Package testing & refinements & final plan for test lab.
(September/January) Status: Underway



3) Testing by Test Lab Participants (*) – refinement requirements identified.
(February) Status: Planned



4) Refinements and delivery of final DAW Package
(March) Status: Planned

(*) Two day Participant Test Lab tentatively scheduled for the week of February 17th in Vancouver.

Sample Datasets

Type of Testing Dataset	Feature Type	Source of Dataset
Polygon	Building Footprint	Sooke
Polygon	Zoning	Port Moody
Polygon	Tantalis Transportation	GeoBC
Polyline	Agricultural Land Reserve Boundaries	Agricultural Land Commission
Polyline	Utility Distribution Network	FortisBC
Point	Address Points	Summerland
Annotation	Address Annotation	CSRD

Internal Testing at Esri Canada

- **Critical component for reducing risk and identifying need for refinements (to workflows, software, documentation)**
- **Dedicated test environment with two testers**
- **Each of the sample datasets to be tested for:**
 - **Initial alignment workflow**
 - **On-going alignment workflow**
 - **Additional samples may be tested if time permits**
- **Refinements to be incorporated before Participant Test Lab**

Internal Testing at Esri Canada (Con't)

- *Internal Testing Status Update:*
 - *Sample data sets very helpful in assessing production-readiness of workflows - highlighted necessity of testing with real data and scenarios.*
 - *Esri Canada has been reworking and enhancing the workflow steps to optimize initial alignment results. Focus on:*
 - *accommodating data of various structures & qualities (sometimes it is not clear who is "right", e.g., natural boundaries, line strings vs. curves)*
 - *demonstrably improving data - "do no harm"*
 - *defining workflow expectations (data preparation, operator effort/time required, results achieved)*

Internal Testing at Esri Canada (Con't)

- *Internal Testing Status Update:*
 - *Full automation of initial alignment may not be achievable (at least for some data sets).*
 - *Semi-automated approaches better-leverage the skill sets of the operator in helping train the automated processing to get better (and faster) results.*
- *Key Points:*
 - *Internal testing is taking longer than estimated*
 - *Results are promising*
 - *Additional time spent now will yield better results in the long run!*

Participant Test Lab Approach

- **Two-day lab workshop in Vancouver – two trainers**
- **Test Lab Kickoff Meeting tentatively scheduled for October 23rd**
- **Two day test lab tentatively scheduled for February 19th & 20th**
- **Will cover both initial and on-going alignment workflows:**
 - **Introduction to tools, techniques and workflows**
 - **Demonstrations of Beta DAW Package using sample datasets**
 - **Participants practice using Beta DAW Package on their own data**
- **Follow-up, in-house testing and feedback by Test Lab Participants (with remote support)**

Test Lab Participants

1. **City of Burnaby**
2. **Agricultural Land Commission**
3. **Columbia Shuswap Regional District**
4. **GeoBC**
5. **City of Port Moody**
6. **Sunshine Coast Regional District**
7. **District of Sooke**
8. **District of Summerland**
9. **FortisBC**
10. **Urban Systems**
11. **Harterra Spatial Solutions**

Final Deliverables

- **Final DAW Package:**
 - **Presentation & Demonstration**
 - **LandSure DAW Package License**
 - **DAW software and user documentation (processes and tool usage, examples)**
 - **Final report (testing results, related metrics, related recommendations for deployment)**
- **Follow-up support**

Discussion

