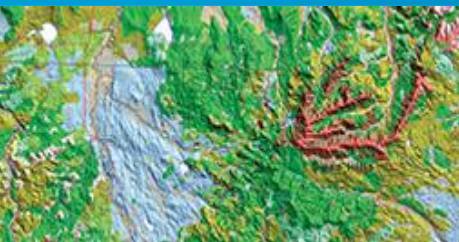


ParcelMap BC AWG Workshop

Session #11: Data Alignment Workflows Test Lab – Project Update

Myron Doherty, Dave Horwood, Sarah Sibbett, Dave Gariepy



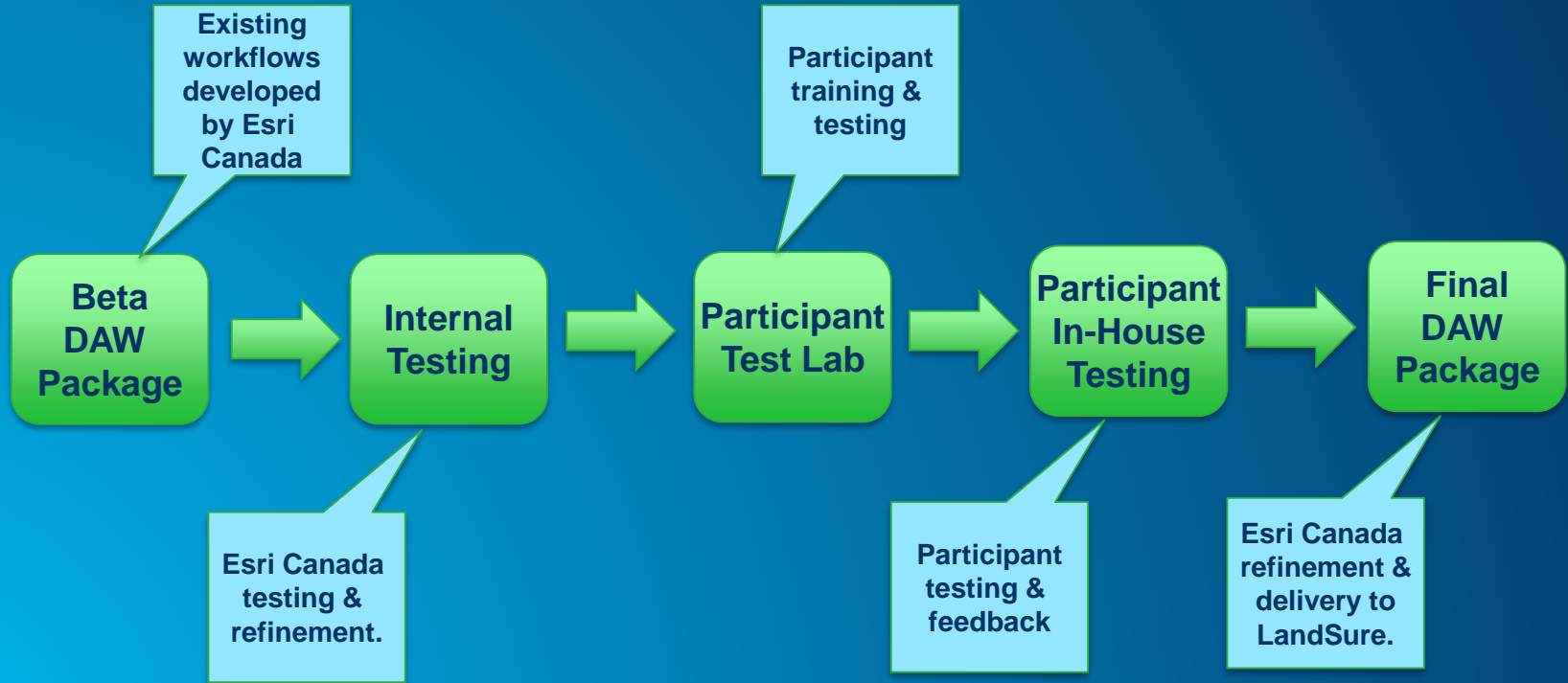
Presenters

- **Myron Doherty, Director Pacific Region**
- **Dave Horwood, Land Information Systems Architect**
- **Sarah Sibbett, Senior Consultant**
- **Dave Gariepy, Director, Land Information Solutions**

Project Background


- Initial & on-going alignment challenges
- We have developed Data Alignment Workflows (“DAW”) to help address these challenges
- These workflows have been tested internally but need further “real world” testing, validation & refinement:
 - Test with real data sets – internal and end-user testing
 - Refinements based upon testing results
- Goal is to make workflows available to PMBC Adoption community at no cost to end users

Test Lab Project Approach




Project Milestones


1) Project Kick-off and Esri Canada Test Environment set-up.
(September/October) Status: Completed



2) Initial Beta DAW Package testing & refinements & final plan for test lab.
(September/October) Status: Underway



3) Testing by Test Lab Participants (*) – refinement requirements identified.
(November/December) Status: Planned



4) Refinements and delivery of final DAW Package
(December) Status: Planned

(*) Two day Participant Test Lab tentatively scheduled for the week of November 18th in Vancouver.

Criteria for Selecting Sample Data Sets

- **Jointly established by LandSure, ICI and Esri Canada**
- **For internal testing at Esri Canada and Participant Test Lab training**
- **Types of testing datasets:**
 - **Polygon data (2 datasets) – e.g., Zoning Boundaries, Jurisdictional Boundaries;**
 - **Polyline data (2 datasets) – e.g., ALR Boundaries, Street Centreline**
 - **Point Data (1 dataset) – e.g., Address Points**
 - **Annotation data (1 dataset) – e.g., Street Names**

Sample Datasets

Type of Testing Dataset	Feature Type	Source of Dataset
Polygon	Building Footprint	Sooke
Polygon	Zoning	Port Moody
Polygon	Tantalis Transportation	GeoBC
Polyline	Agricultural Land Reserve Boundaries	Agricultural Land Commission
Polyline	Utility Distribution Network	FortisBC
Point	Address Points	Summerland
Annotation	Address Annotation	CSRD

Internal Testing at Esri Canada

- **Critical component for reducing risk and identifying need for refinements (to workflows, software, documentation)**
- **Dedicated test environment with two testers**
- **Each of the sample datasets to be tested for:**
 - **Initial alignment workflow**
 - **On-going alignment workflow (more testing will take place if time permits)**
 - **Additional samples may be tested if time permits**
- **Refinements to be incorporated before Participant Test Lab**

Participant Test Lab Approach

- **Two-day lab workshop in Vancouver – two trainers (one lead and one support)**
- **Tentatively scheduled for the week of November 18th**
- **Will cover both initial and on-going alignment workflows:**
 - **Introduction to tools, techniques and workflows**
 - **Demonstrations of Beta DAW Package using sample datasets**
 - **Participants practice using Beta DAW Package on their own data**
- **Follow-up, in-house testing and feedback by Test Lab Participants (with remote support)**

Test Lab Participants

1. **City of Burnaby**
2. **Agricultural Land Commission**
3. **Columbia Shuswap Regional District**
4. **GeoBC**
5. **City of Port Moody**
6. **Sunshine Coast Regional District**
7. **District of Sooke**
8. **District of Summerland**
9. **FortisBC**
10. **Urban Systems**
11. **Harterra Spatial Solutions**

Final Deliverables

- **Final DAW Package:**
 - **Presentation & Demonstration**
 - **LandSure DAW Package License**
 - **DAW software and user documentation (processes and tool usage, examples)**
 - **Final report (testing results, related metrics, related recommendations for deployment)**
- **Follow-up support**

Discussion

