



ParcelMap BC Adoption Working Group

Workshop #4

December 19th 2018

10:00 am to 12:00 pm

Web Conference

Brian Greening

AWG Chair

Director, ParcelMap BC Operations, LTSA

Ann Archibald

AWG Vice-Chair

Executive Director, ICI Society

Agenda

Welcome / Opening Remarks	10:00 am
Adoption Working Group (AWG) Housekeeping	10:05 am
ParcelMap BC Status Update <ul style="list-style-type: none"> • LTSA Fabric Operations (FabOps): Current Stats • ParcelMap BC Adoption Uptake: Progress Stats • UPDATE (WS-3): Adoption Status Reporting – Coming Changes 	10:10 am
Follow-up on Action Items from past Workshops <ul style="list-style-type: none"> • UPDATE (WS-3): ParcelMap BC Data Model: Education and/or simplified model • UPDATE (WS-3): BCA Workflow & Process Improvement for ParcelMap BC Updates • REVIEW (WS-3): Top 3 Initiatives For Action by AWG Facilitation Team • UPDATE (WS-2): Federal Lands dataset alignment progress 	10:25 am
ICI Society 360Labs ParcelMap BC Workshops <ul style="list-style-type: none"> • Overview • Lab #1 – Victoria / South Vancouver Island • Summary of findings • Next venues 	11:15 am
Future Workshops <ul style="list-style-type: none"> • REVIEW: Results of future topics to workshop in the next working sessions • Workshop #5 (In-Person) Date & Logistics • Subsequent Workshop Dates – March Break Issues? 	11:30 am
Open Questions, Feedback & Wrap-Up	11:50 am

Housekeeping

Group Changes:

Agricultural Land Commission

- Unfortunately has to leave AWG
- Still committed to adoption / available for contact
- “Aiming ALR alignment with ParcelMap BC Q1 – Q2 2019”

Any Participant items to add?

ParcelMap BC Ops: Current Stats

Verbal Update...

Under 2 Day Plan Turnaround

More Spatial Improvements

- Armstrong Complete
- Mission Underway
- New Assessment published December 14th



Adoption Progress Stats

Verbal Update...

New adopters!!!!

- Regional District of Bulkley-Nechako
- City of Cranbrook
- Regional District of Kitimat-Stikine
- Squamish-Lillooet Regional District
- City of Grand Forks

UPDATE (WS# 3): Adoption Status Reporting

Update & discussion on:

Adoption Status Reporting

- Coming Changes – Tracking states & groups
- Action from Working Session #3

UPDATE (WS #3): ParcelMap BC Data Model

Update & discussion on:

ParcelMap BC Data Model Products

- Education / Documentation
- “Simplified” data model product
- Action from Working Session #3

UPDATE (WS #3): BCA Workflows

Update & discussion on:

BC Assessment Workflows

- Process Improvement for ParcelMap BC Updates
- Plan Updates for Folio Creation
- Action from Working Session #3

REVIEW (WS #3): Top 3 Initiatives For Action

Review & discussion on:

Top 3 Initiatives For Action by AWG Facilitation Team

- Review Survey Results

13 Unique Replies:

1. Additional Parcel Types
2. Education / Documentation
3. Live / Dynamic Web Service

- Action from Working Session #3

UPDATE (WS #2): Federal Lands dataset alignment

Update & discussion on:

Federal Lands dataset alignment

- Progress / discussions with NRCan
- Action from Working Session #2

360LABS – ICI Society Workshops

Developed as a way to further support our members by:

- Reaching out to members in a practical setting;
- Providing a workspace to explore new ideas or initiatives;
- Developing, communicating and testing ‘Best Practices’;
- Facilitating a real-time feedback loop for data providers and consumers;
- Sharing and learning with Subject Matter Experts from our membership;



Network with colleagues.

Start the dialogue.

Ask the hard questions.

innovation. | integrity. | trust.



360LABS – ICI Society Workshops

Participants roll up their sleeves to:



*“You bring the beaker and
together we will mix up a
solution”*

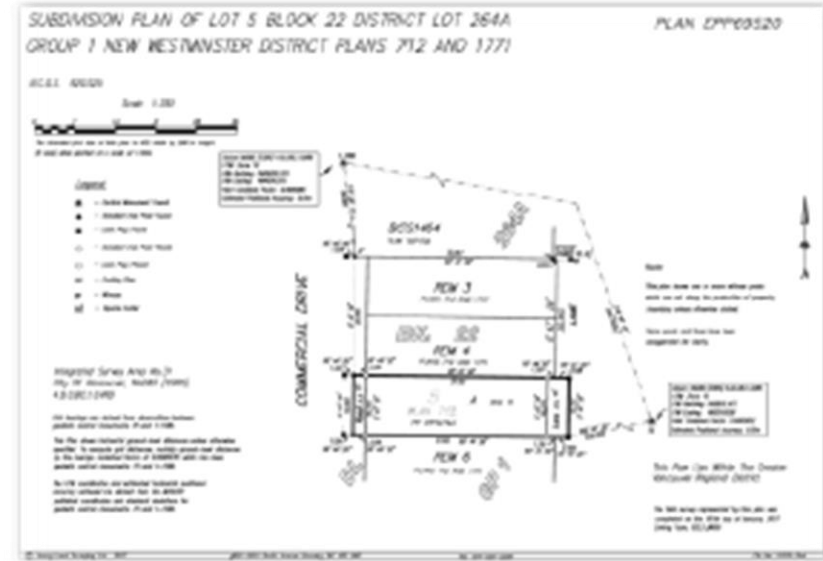
1. **Learn how** ParcelMap BC is compiled.
2. **Document their own** parcel management workflow to identify:
 - a. **Important characteristics** to be considered.
 - b. **Benefits** of transitioning to ParcelMap BC.
3. **Describe concrete actions:**
 - a. Analyze,
 - b. Prototype,
 - c. Integrate.



innovation. | integrity. | trust.

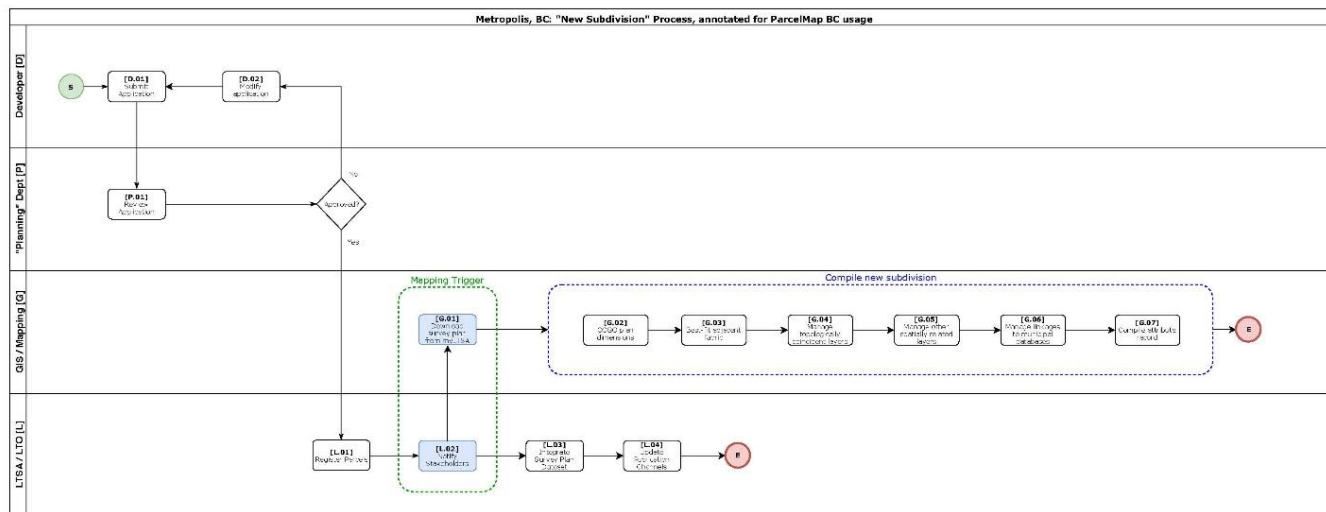


ParcelMap BC Operations: “Deep-Dive” & Demo



innovation. | integrity. | trust.

Current Parcel Workflow- Lands Records Update Stage



Proposed Parcel Stage

What is the nature of record keeping at this stage?

i.e. Hard-copies of proposed plans are maintained in a property folder, indexed by development name. A copy is forwarded to the Engineering Department, which maintains the enterprise GIS.

What municipal functions are supported by this information?

i.e.

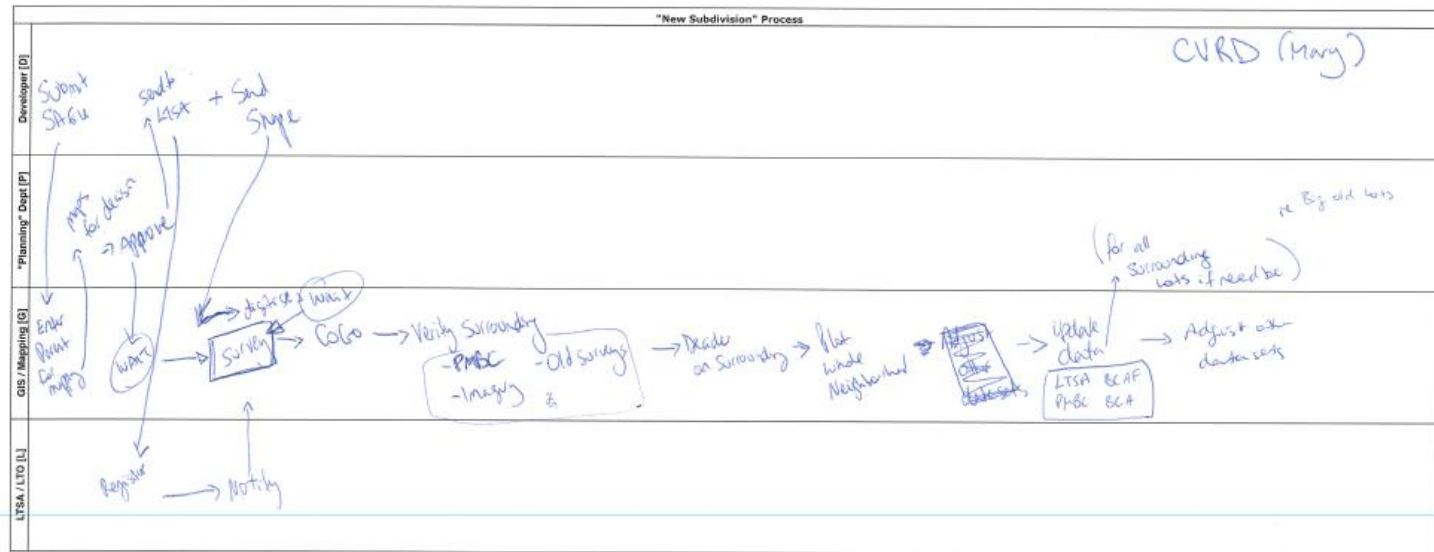
- Address assignment
- Municipal engineering services planning (water, sewer and stormwater)
- 3rd party utility planning (gas, electricity)

Land Records Update Stage

What are the key mapping characteristics that may be "impacted" by modifications to this workflow to use ParcelMap BC? Impacts should include both the benefits anticipated and possible impediments to be considered. Use the table to describe key characteristics of the mapping processes and associated benefits and considerations associated with using ParcelMap BC.

[ID]	Key mapping characteristics (Current Process)	ParcelMap BC Benefits	ParcelMap BC Considerations
[G.01]	Plan is geo-referenced and associated to parcels by plan name; staff can access from internal web map using hyperlink function.	Don't have to download for compilation purposes.	Still require plan image for staff hyperlink function.
[G.02]	ArcMap COGO used to capture parcel boundaries; line-work with COGO attributes retained in addition to polygons with parcel attribution.	Compilation can take days for large subdivision plans.	
[G.03]	New subdivisions establish control for surrounding parcels. Existing fabric is adjusted to the new plan.	Real-world changes identify new subdivisions	What about a new subdivision in an area of poor spatial quality?
[G.04]	Manual edits to zoning and OCP layers, if applicable/coincident.	Change vectors can identify locations that require update.	Can change vectors be applied automatically in ArcMap?
[G.05]	Manual edits to municipal infrastructure in the right-of-way to ensure offset alignment.		Can change vectors be applied to non-coincident data?
[G.06]	PID (i.e. 123-456-789) and Roll (i.e. 234.05340024) support cross-database query functions to accounting and licensing databases.		Format of key identifiers
[G.07]	Decomposed legal description component attributes are used for large-format municipal maps (hard-copy) used in Building, Engineering and Fire Departments.		Format of legal descriptions

Current Parcel Workflow- Lands Records Update Stage



Proposed Parcel Stage

What is the nature of record keeping at this stage?

What municipal functions are supported by this information?

- Planning
- Engineering
- Corporate Services
- Environment
- Transit
- Recreation
- Tourism/Economic Development

Land Records Update Stage

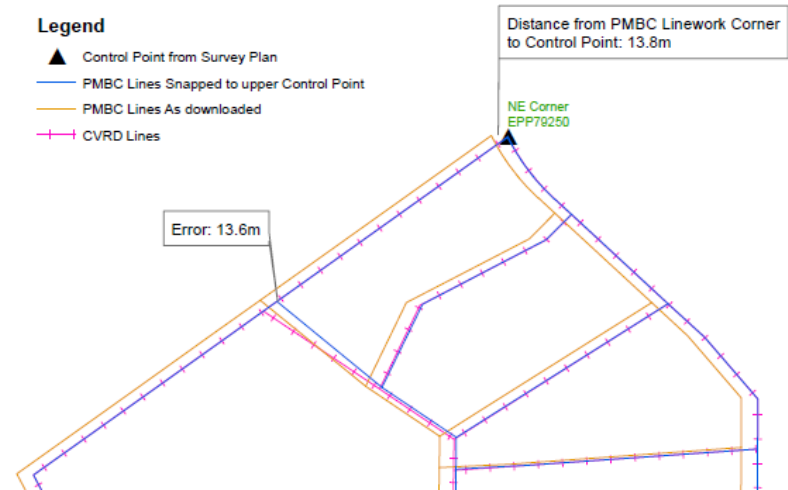
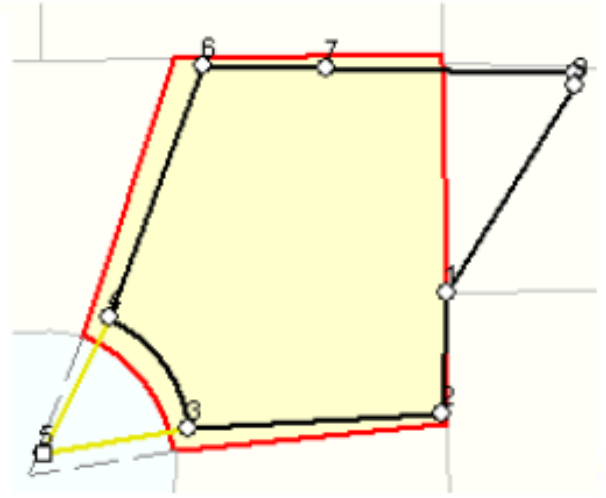
What are the key mapping characteristics that may be "impacted" by modifications to this workflow to use ParcelMap BC? Impacts should include both the benefits anticipated and possible impediments to be considered. Use the table to describe key characteristics of the mapping processes and associated benefits and considerations associated with using ParcelMap BC.

[ID]	Key mapping characteristics (Current Process)	PMBC Benefits	PMBC Considerations
①	Use PMBC for only what's on Survey, Needs for surrounding due to not seeing good neighborhood replots	Other survey using good + imagery	Neighboring lots not being subdivided
②	We use supporting data when deciding on replots	imagery - surveys - other photos - control points	"Editing in a void" Survey not add ICF data to see if we have replotted the area since 2016
③	Stratas - we map all CP lines, LCP, Access, + footprints → Bareland, building etc.		No Geometry for Stratas → BCR impediment to adoption
④	New Survey trigger	Maped for us, currently faster than we map it.	

Parcel Workflow – Current Process

Findings – Common Themes

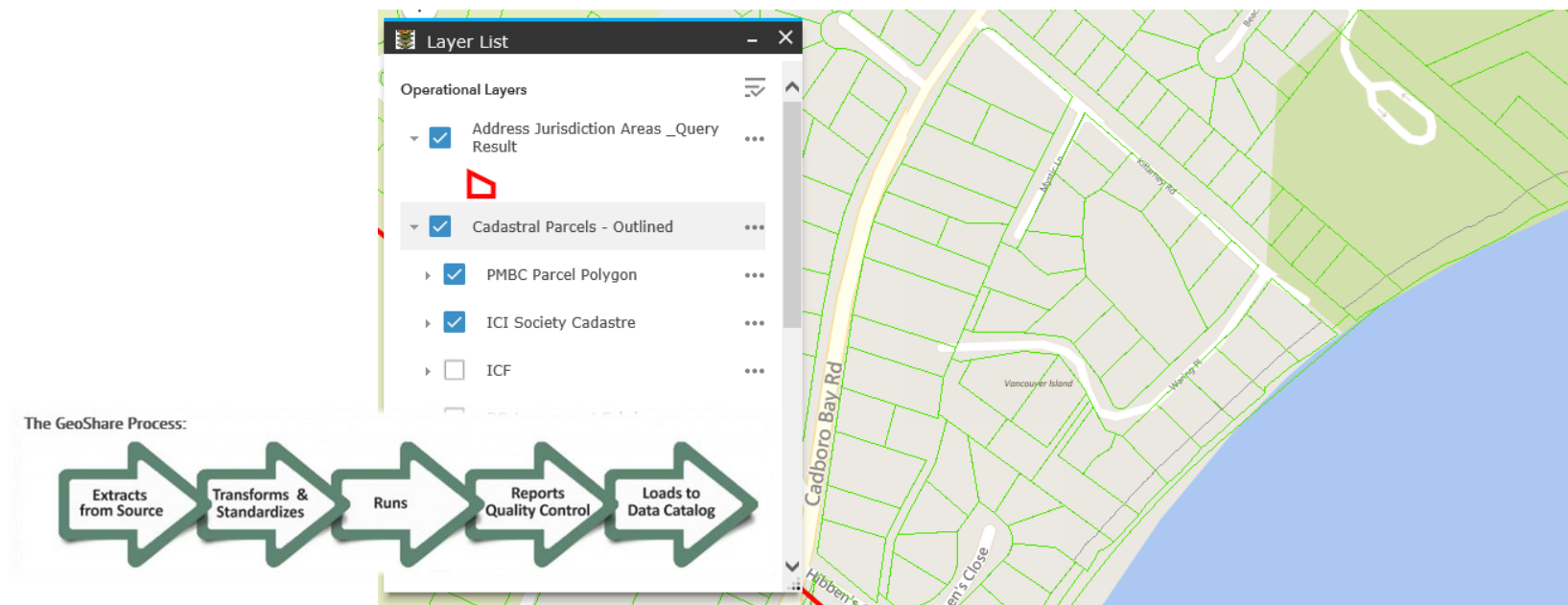
1. Join methodology for new subdivisions



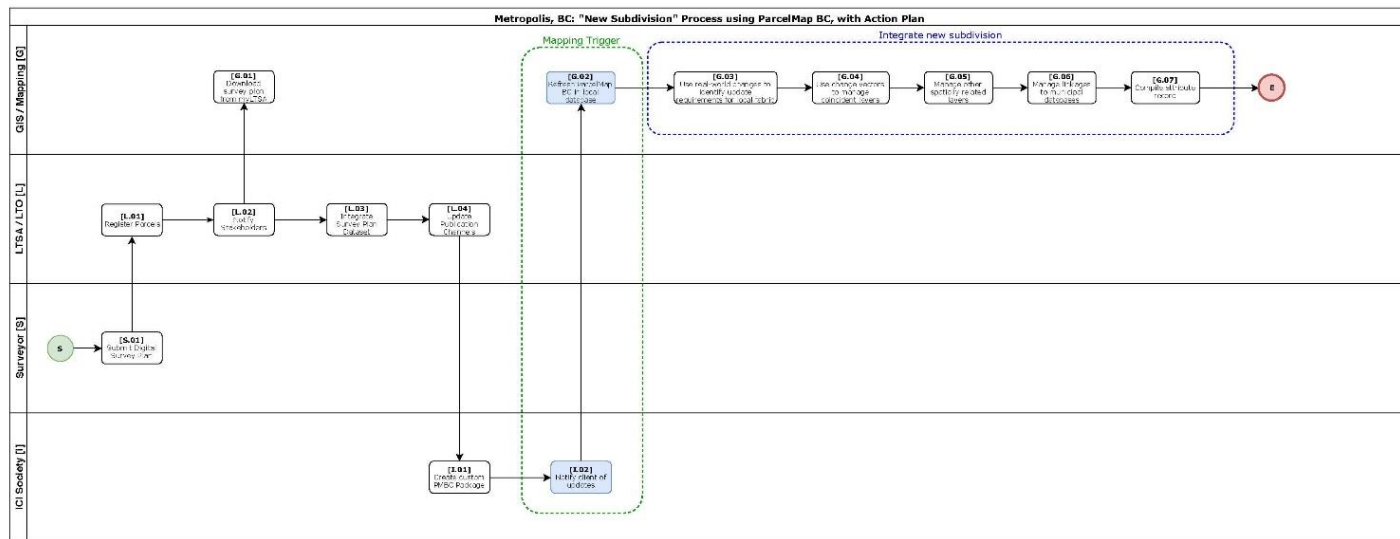
Parcel Workflow – Current Process

Findings – Common Themes

1. Locally Generated Improvements – post ParcelMap BC Compilation



ParcelMap BC Action Plan



Proposed Parcel Stage

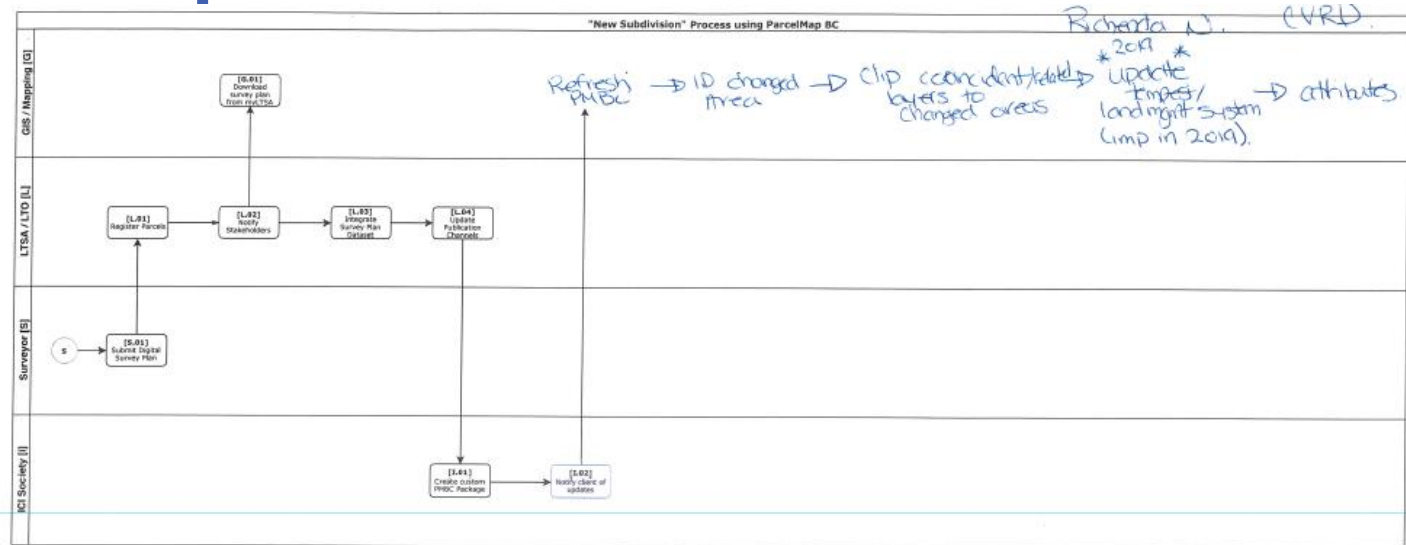
Does the availability of ParcelMap BC imply any modifications to your current handling of proposed parcel information? If so, how?

ParcelMap BC Action Plan

What are some steps that you would consider taking towards integrating ParcelMap BC as part of your Land Records management workflow? Use the table to describe analyses, process adjustments or enhancements that will enable you to leverage the benefits of ParcelMap BC while managing the key considerations for your organization. What is a reasonable timeline for implementation?

Action	Notes	Difficulty	Timeline
Set up custom PMBC package	Implement custom ID formatting requirements and establish weekly schedule for automation	Low	2018 Q4
Compare fabrics	Identify any alignment issues between ParcelMap BC and my local fabric. Compare parcel inventories using PIDs, Juroils and PINs to assess fabric completeness. Identify other semantic differences in the mapping, such as the presence or absence of various parcel types (i.e. interests, rights-of-way, foreshore and First Nations territory).	High	2019 Q2
Understand ParcelMap BC change products	Review "real world changes" and "change vector" products over a period of time to understand how these identify changes within the fabric and trigger other updates to the GIS database.	Medium	2019 Q1
Refine custom ParcelMap BC package	Update weekly custom package specifications to better integrate with operational systems and requirements based on a better understanding of the ParcelMap BC fabric.	Medium	2019 Q1
Dual maintenance mode	Utilize ParcelMap BC primarily in a reference capacity for a period of time, in parallel with existing fabric management workflows, to establish confidence in the product contents, latency and operational integration workflows.	Medium	2019 Q3
Transition	Operationalize ParcelMap BC as the principal survey fabric, implementing data refresh, (related) system referential integrity, and (related) layer maintenance processes. Internal fabric is demoted to historical archive.	High	2019 Q4

ParcelMap BC Action Plan



Proposed Parcel Stage

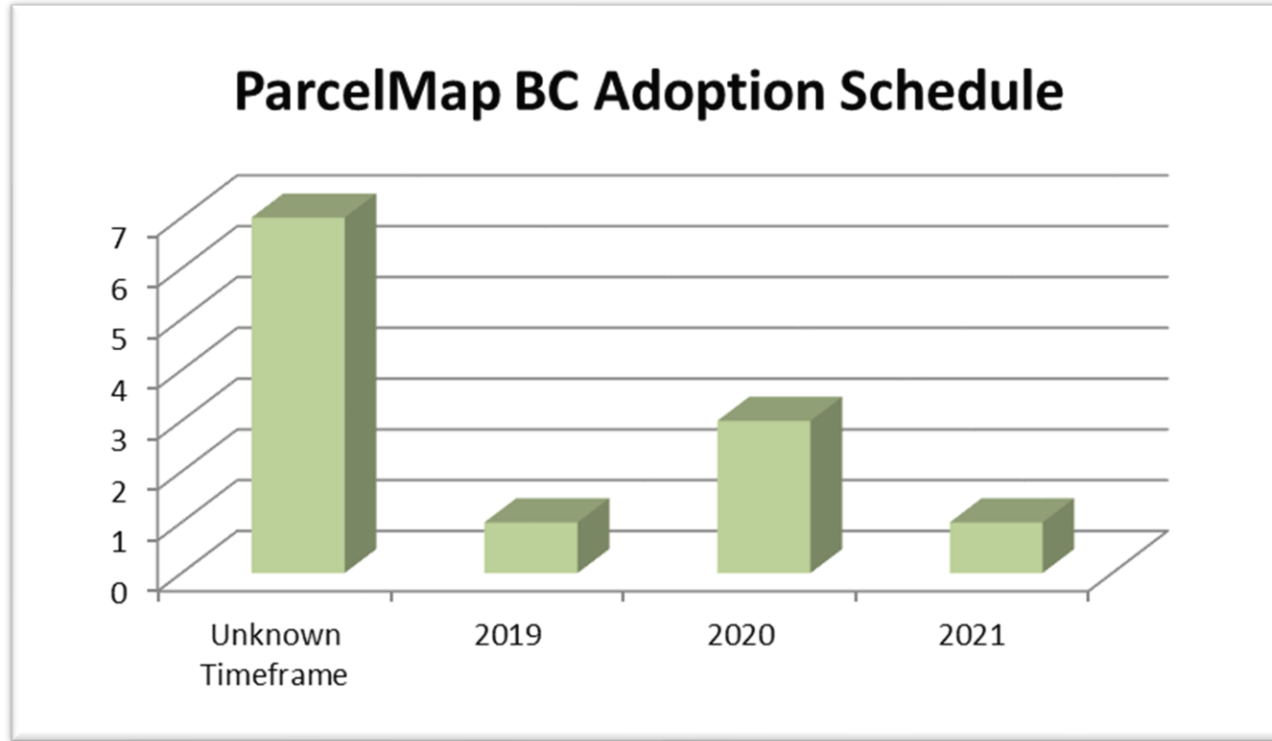
Does the availability of ParcelMap BC imply any modifications to your current handling of proposed parcel information? If so, how?

ParcelMap BC Action Plan

What are some steps that you would consider taking towards integrating ParcelMap BC as part of your Land Records management workflow? Use the table to describe analyses, process adjustments or enhancements that will enable you to leverage the benefits of ParcelMap BC while managing the key considerations for your organization. What is a reasonable timeline for implementation?

Action	Notes	Difficulty	Timeline
Custom PMBC Pkg	May have to update source-related ID field when we move to longmgt system in 2019	Low	potential update in 2019 completed
Compare fabrics	started, but would need a better look for adoption	High	2019 Q2
Assess rest of pkg	Assess other products in custom package @ same time as fabric	High	"
Make any changes to package		Low	2019 Q3
Input updated/better VRD fabric	Place for customers to upload improved spatial fabric for PMBC reference	Low (high for VRD)	2019 Q3
Re-download PMBC pkg & compare fabrics again	Reassess fabrics / changes	High	2019 Q4
Transition	decommission our fabric & implement PMBC	High	2020 Q1/Q2

ParcelMap BC Action Plan



360Labs for the AWG

Thoughts of the Group:

1. Is the Group interested in an AWG 360Lab?
2. January or March session? (Prep work required...)

REVIEW: Future Topics to Workshop

Review & discussion on:

Future topics to workshop in the next working sessions

- Survey Results
4 unique replies...
 1. 3rd Party Data Alignment
 2. Documentation & Education
- Action from Working Session #3

Future Workshops

Workshop #5 (In-Person) Date & Logistics

Wednesday January 16th – 10:30a - 2:00p -- In Person

Vancouver (LandSure) & Victoria (LTSA Atrium)

Subsequent Workshop Dates

Wednesday February 20th – 10:00a - 12:00p (Web Conference)

Wednesday March 20th – 10:30a - 2:00p (In Person)

Wednesday April 17th – 10:00a - 12:00p (Web Conference)

More to follow...

Wrap-Up

Group Feedback?

Open Questions?

Next Steps...

HAPPY HOLIDAYS!!!!!!