



# ParcelMap BC Adoption Working Group

## Workshop #10

June 19<sup>th</sup> 2019

10:00 am to 12:00 pm

Web Conference

**Brian Greening**

AWG Chair

Director, ParcelMap BC Products, LTSA

**Ann Archibald**

AWG Vice-Chair

Executive Director, ICI Society

# Agenda

Welcome / Opening Remarks	10:00 am
Adoption Working Group (AWG) Housekeeping <ul style="list-style-type: none"> <li>• Tempest Land Records Sub-Group Update</li> <li>• Other Updates</li> </ul>	10:05 am
ParcelMap BC Status Update <ul style="list-style-type: none"> <li>• LTSA Fabric Operations (FabOps): Current Stats</li> <li>• ParcelMap BC Adoption: Status Reporting</li> </ul>	10:15 am
ParcelMap BC Operations Team: Data Clean-up During Fabric Operations <ul style="list-style-type: none"> <li>• Background &amp; Context</li> <li>• Working Solution</li> <li>• Use Cases and Result of Use</li> <li>• Feedback and Discussion on Impact to Stakeholders</li> </ul>	10:20 am
Follow-up on AWG #9: Data Alignment with ParcelMap BC <ul style="list-style-type: none"> <li>• Actions Underway / Plans for the Coming Months</li> <li>• Call for Participation in Data Alignment Sub-Group</li> <li>• Data Alignment Sub-Group Workshop (TBC – September)</li> </ul>	10:45 am
ParcelMap BC Adopter Issues Log <ul style="list-style-type: none"> <li>• Overview &amp; Context</li> <li>• Triage into Challenges, Opportunities &amp; Benefits</li> <li>• Impact &amp; Priority Rankings</li> <li>• Collaboratively Tackling Challenges &amp; Opportunities</li> <li>• Survey for Participants</li> </ul>	11:15 am
Future Workshops <ul style="list-style-type: none"> <li>• Workshop #11 (In-Person – September 18<sup>th</sup>): Structure &amp; Topic(s)</li> </ul>	11:50 am
Open Questions, Feedback & Wrap-Up	11:55 am

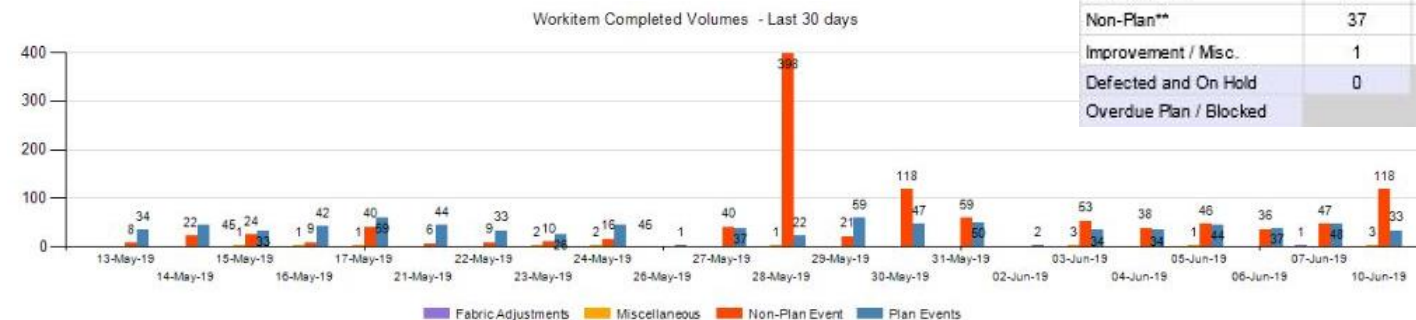
# AWG Housekeeping

1. Tempest Land Records Sub-Group Update (Vanessa / Brian / Jason)
2. Lots of updated documentation on <https://itsa.ca/parcelmapbc> – Now live!  
ParcelMap BC Data Products: Product Descriptions!  
<https://help.itsa.ca/parcelmap-bc/parcelmap-bc-data-products-and-description>  
How Parcels are Represented in ParcelMap BC: Parcel Class Descriptions!  
<https://itsa.ca/online-services/about-parcelmap-bc#parcels>  
How Survey Plan Datasets are Used to Update ParcelMap BC: Descriptions and Videos!  
<https://itsa.ca/online-services/operational-status>
3. “Backline SME” Participation
4. Any Participant items to add?

**Input Always Welcome:**  
Please Speak or  
Use GoTo’s Chat

# ParcelMap BC Ops: Current Stats

**Updates:** Still Under 2 Day Plan Turnaround



2019-06-10	New	Completed	Backlog	Daily Turnaround (days)	YTD Turnaround (days)
Plan/Dataset*	39	33	51	1.11	1.18
Non-Plan**	37	105	614		
Improvement / Misc.	1	3	9		
Defected and On Hold	0		13		
Overdue Plan / Blocked			10		



innovation. | integrity. | trust.



# ParcelMap BC Ops: Current Stats

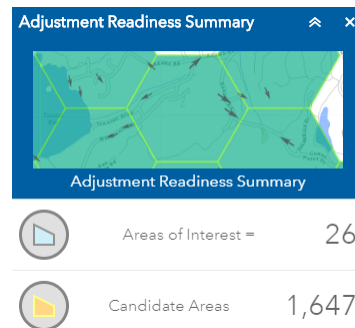
**Spatial Improvements:** Latest [assessment](#) to June 1<sup>st</sup>

## Completed:

AREA OF INTEREST	PUBLICATION DATE
LUMBY	August 1, 2018
BOWEN ISLAND	September 11, 2018
LIONS BAY	September 28, 2018
LAKELSE	November 15, 2018
ARMSTRONG	December 14, 2018
SUN PEAKS	January 17, 2019
MISSION	February 22, 2019
LILLOOET	March 12, 2019
SILVER STAR MOUNTAIN RESORT	April 18, 2019
RURAL PARTS OF COWICHAN VALLEY REGIONAL DISTRICT	April 30, 2019

## Targeted:

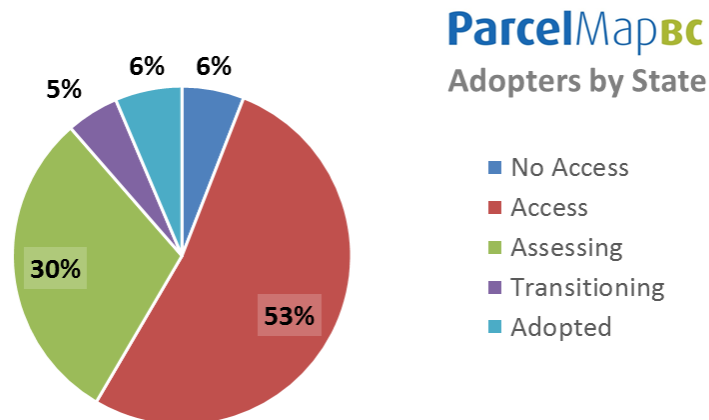
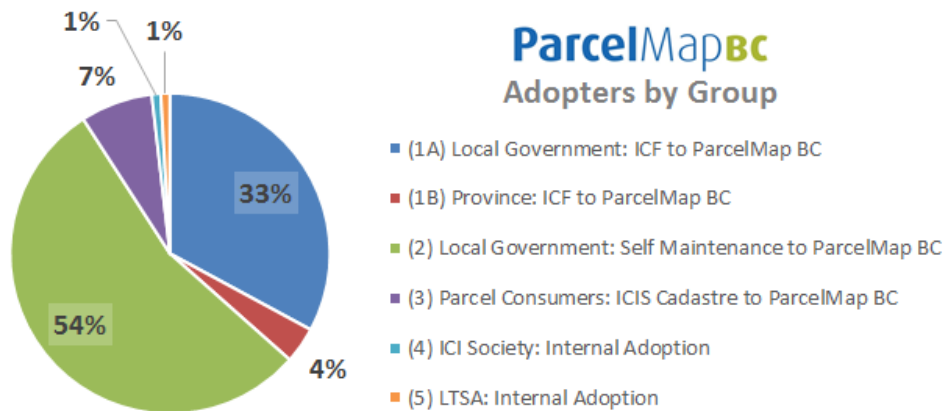
AREA OF INTEREST	TARGET MONTH
RURAL PART SOUTH OF CAMPBELL RIVER	June 2019
LAKE COUNTRY	June 2019
RURAL PART OF NANAIMO REGIONAL DISTRICT	July 2019
COLDSTREAM	August 2019
HOPE	September 2019



innovation. | integrity. | trust.



# Adopter Dashboard: May 31<sup>st</sup> 2019 Snapshot



ParcelMap BC Adopter Groups by State	No Access	Access	Assessing	Transitioning	Adopted	Grand Total
(1A) Local Government: ICF to ParcelMap BC	4	45	11	1	11	72
(1B) Province: ICF to ParcelMap BC	1	0	5	2	0	8
(2) Local Government: Self Maintenance to ParcelMap BC	3	66	45	2	3	119
(3) Parcel Consumers: ICIS Cadastre to ParcelMap BC	5	4	4	3	0	16
(4) ICI Society: Internal Adoption	0	0	0	2	0	2
(5) LTSA: Internal Adoption	0	0	1	1	0	2
Period Ending: 31-May-19	13	115	66	11	14	219

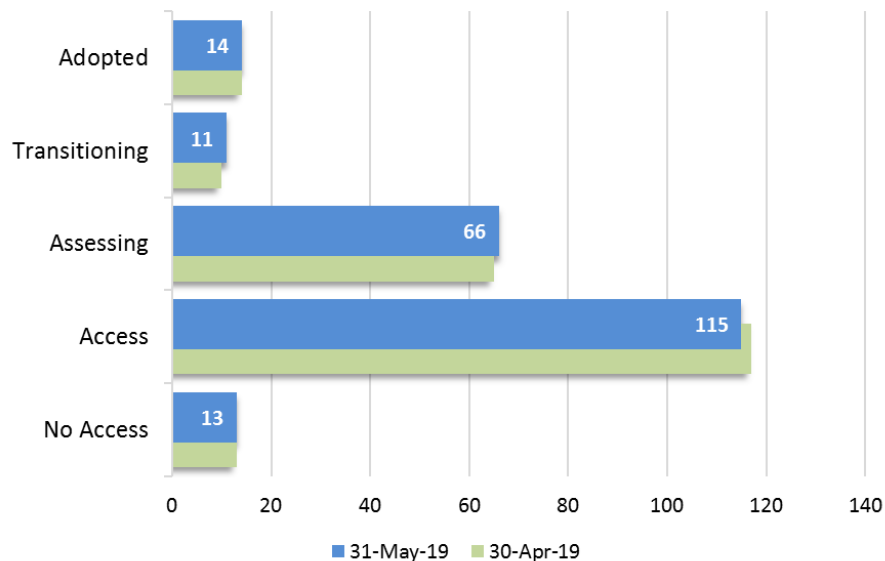
innovation. | integrity. | trust.



# Adopter Dashboard: May 31<sup>st</sup> 2019 Change View

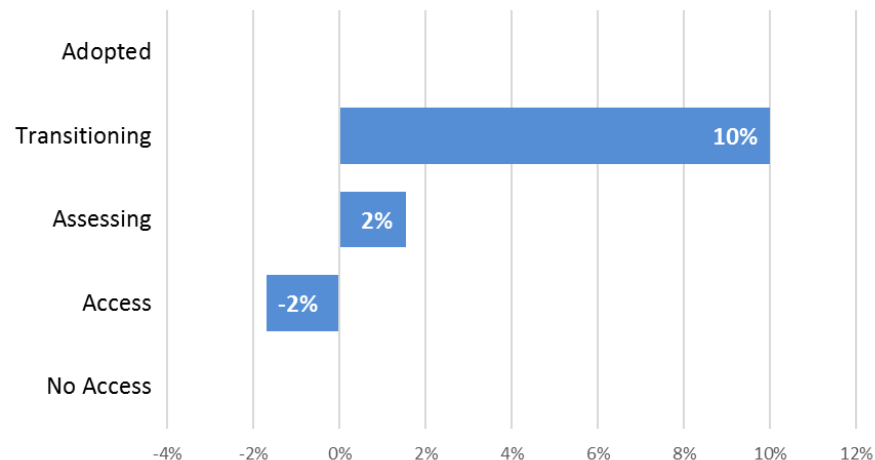
ParcelMapBC

Adoption State Comparison by Period



ParcelMapBC

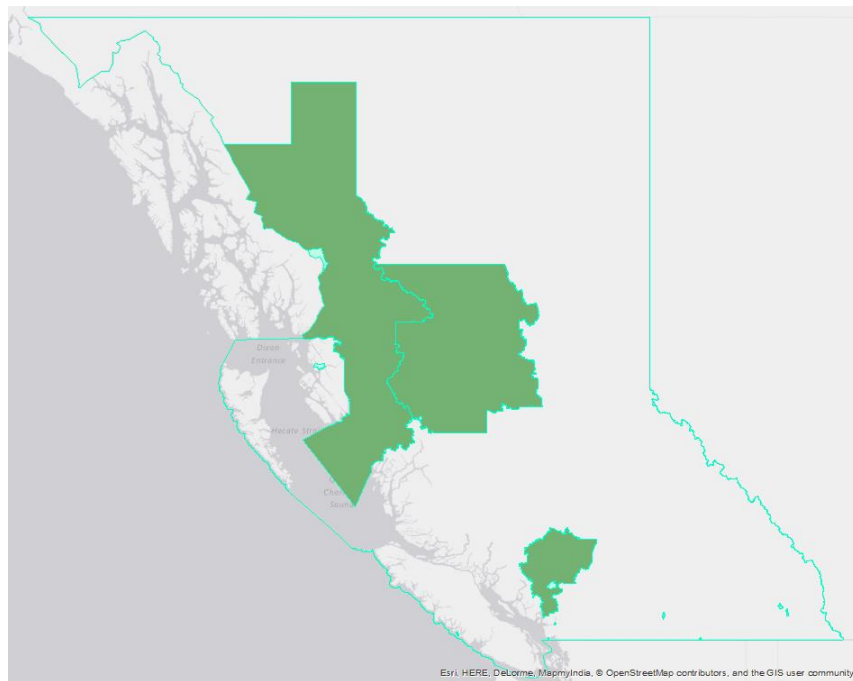
Adoption State Change over Period



# Adaptor Dashboard: May 31<sup>st</sup> 2019 Geo Footprint

## Local Government Adopters:

Resort Municipality of Whistler  
City of Kimberley  
Regional District of Bulkley-Nechako  
City of Cranbrook  
Regional District of Kitimat-Stikine  
Squamish-Lillooet Regional District  
City of Grand Forks  
District of Tofino  
Village of Lion's Bay  
City of Penticton  
District of Stewart  
Tsawwassen First Nation  
District of Port Edward  
Village of Belcarra



## Province-wide Use (not formal Adoptors – yet!)

BC Assessment: ParcelMap BC new standard for Assessment Parcel mapping

Agricultural Land Commission: ParcelMap BC new standard for ALR legal boundary mapping

innovation. | integrity. | trust.





# ParcelMap BC Adoption: Progress Stats

## Update (as of today)...

New adopters!!!!

DataBC

City of Prince Rupert

Village of Ashcroft



# ParcelMap BC Ops: Data Clean-up During Operations

## Discussion on:

### Data Clean-up Practices During Fabric Operations

*Bryan Sawers – Manager, ParcelMap BC Operations*

1. Recap – How it was Built and Maintained
2. Outlining of Problem
3. A Solution / Outline
4. Considerations and Impact
5. Questions / Feedback

# ParcelMap BC: How was it Built & Maintained?

## Focused on using the best / pedigree sources:

### Attribution & Event Triggers

- Land title register: for completeness & attribution on titled parcels
- Crown land registry: for completeness & attribution on Crown land parcels

### Spatial Representation

#### *Initial Compilation*

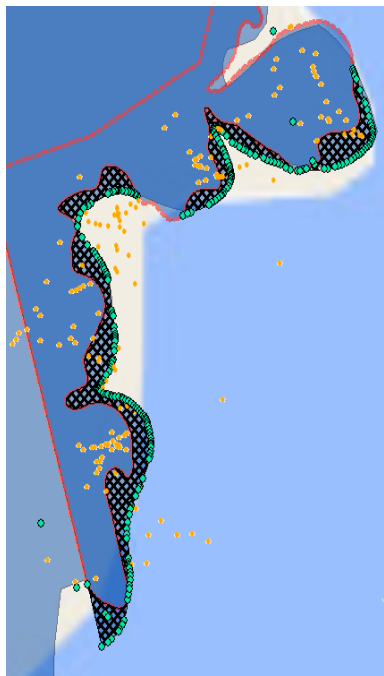
- Geometry inversed from ICF & ICIS Cadastre, TANTALIS or COGO from Plan
- 12000 Cadastral Ties plus MASCOT

#### *During Operations*

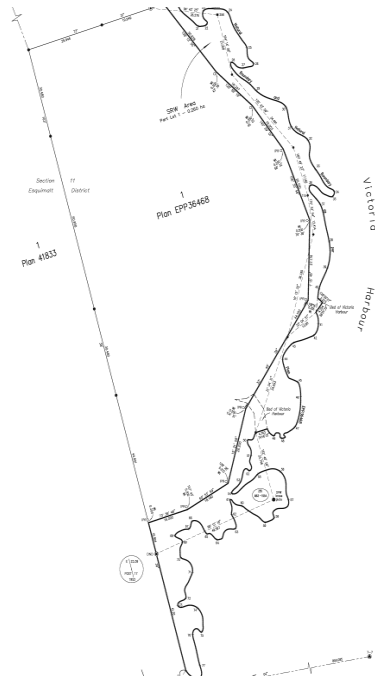
- Geometry from Survey Plan Datasets from Surveyors with surveyed bearings and distances....
- New control with (nearly) every new dataset
- MASCOT Control Monuments
- Updates to Admin Layers
- Surveyed Interests (ex. Easements, rights of way, Road dedications, etc...)

# Geometry problems with Source Data

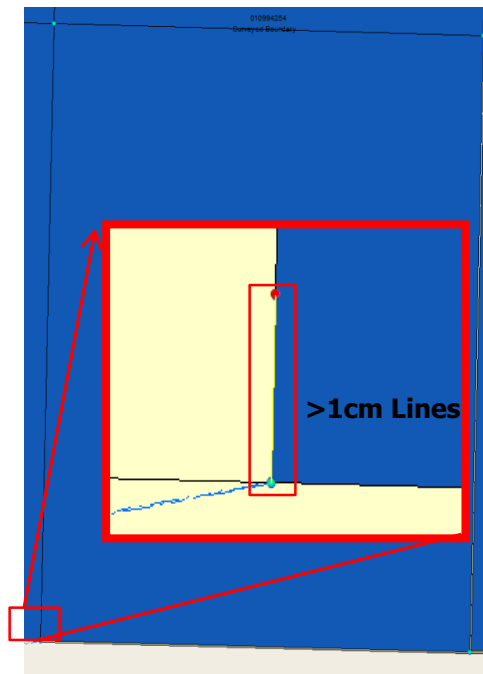
## Densified Curves



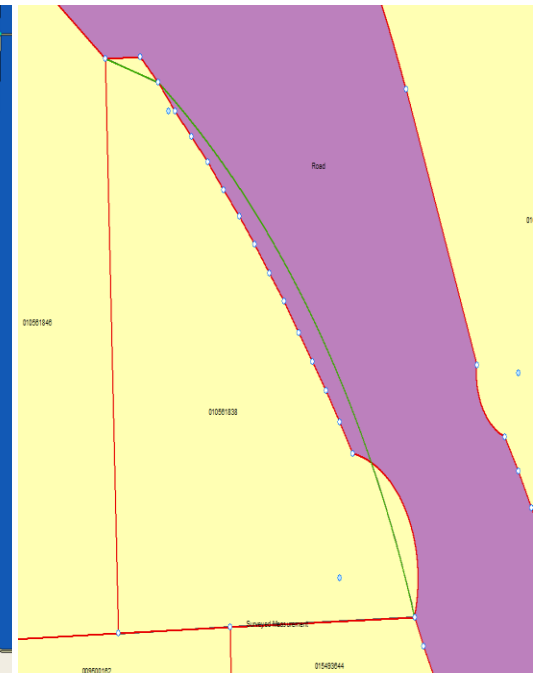
## Linestrings



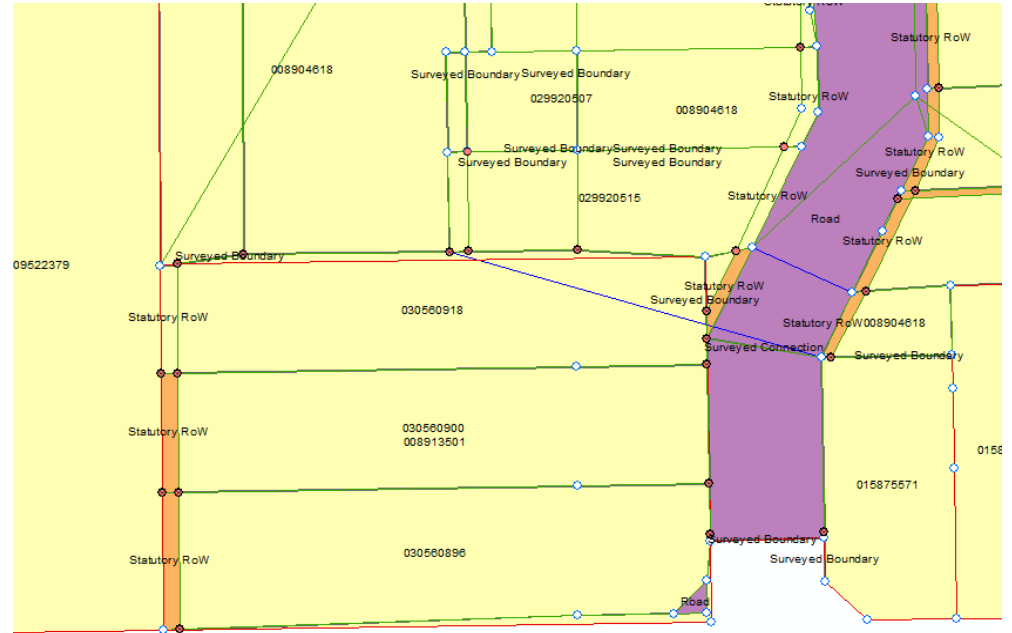
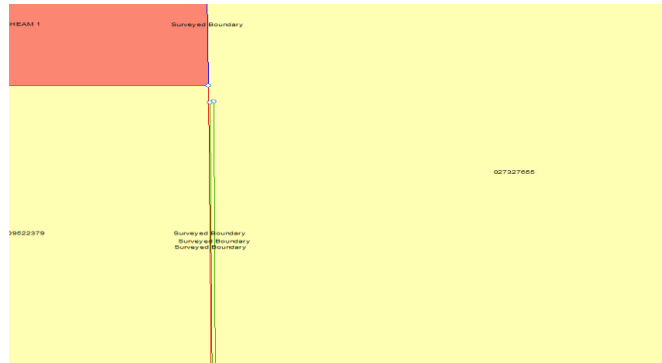
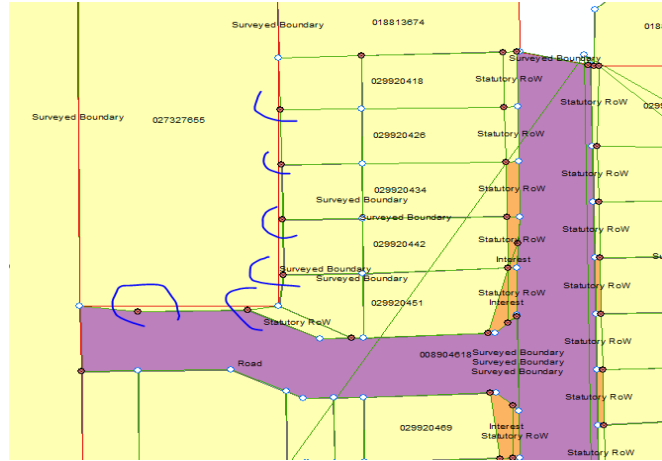
## Close Points



## Inaccurate Parcels

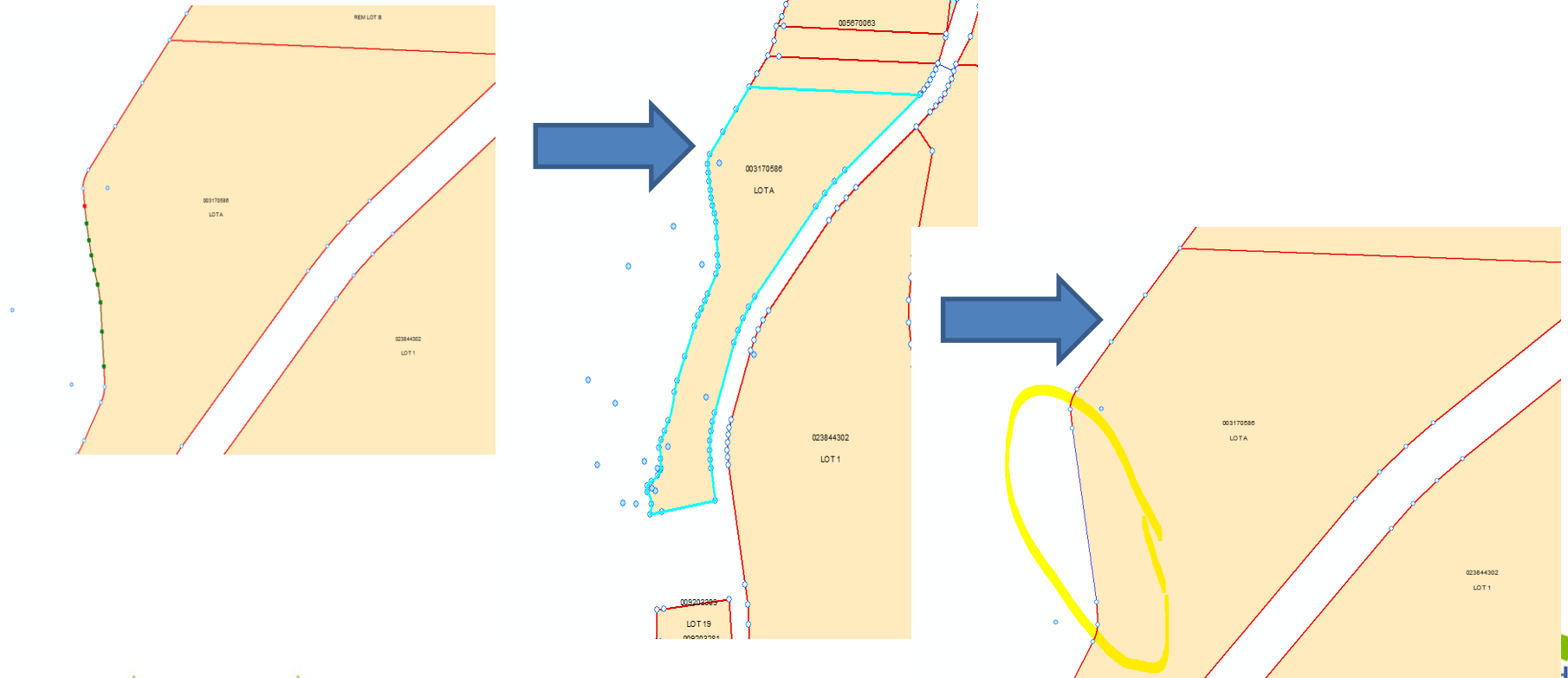


# Compounding the Issues during Integration

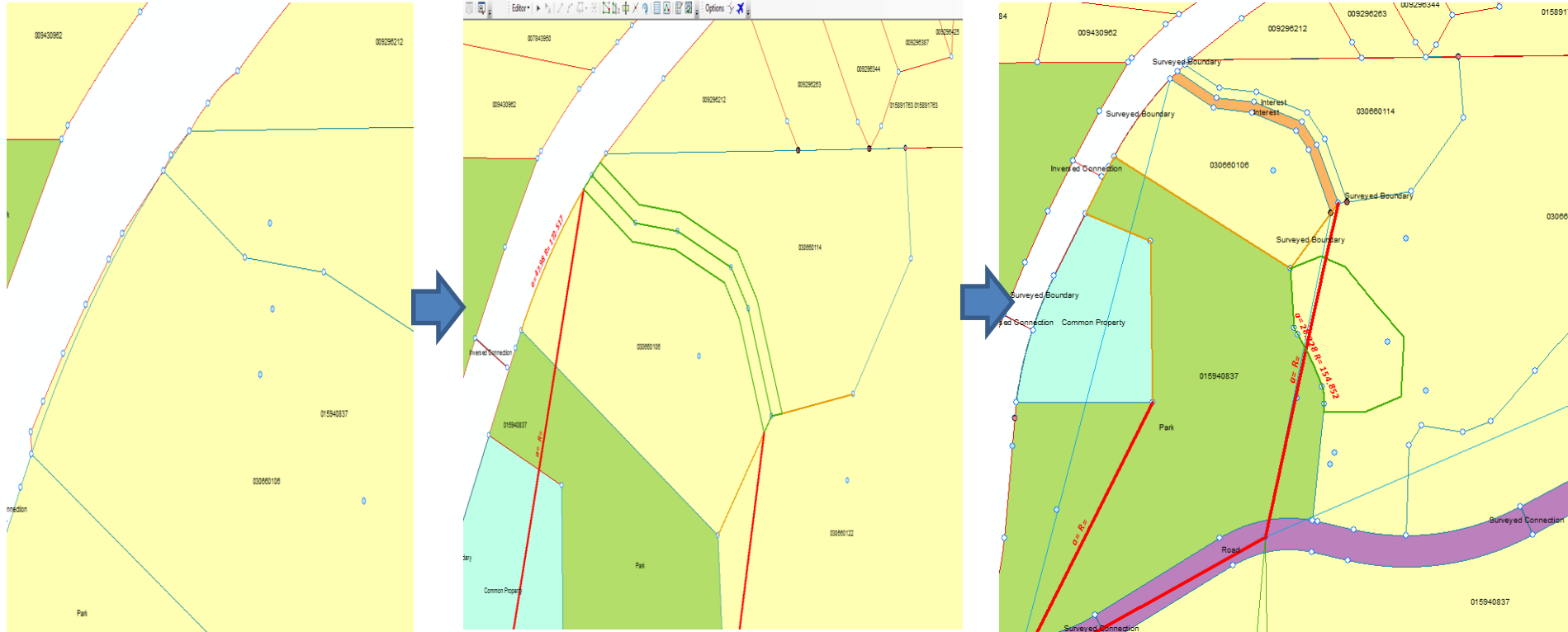


# The Solution:

## Data Cleanup In Fabric



# Improving Integration Productivity

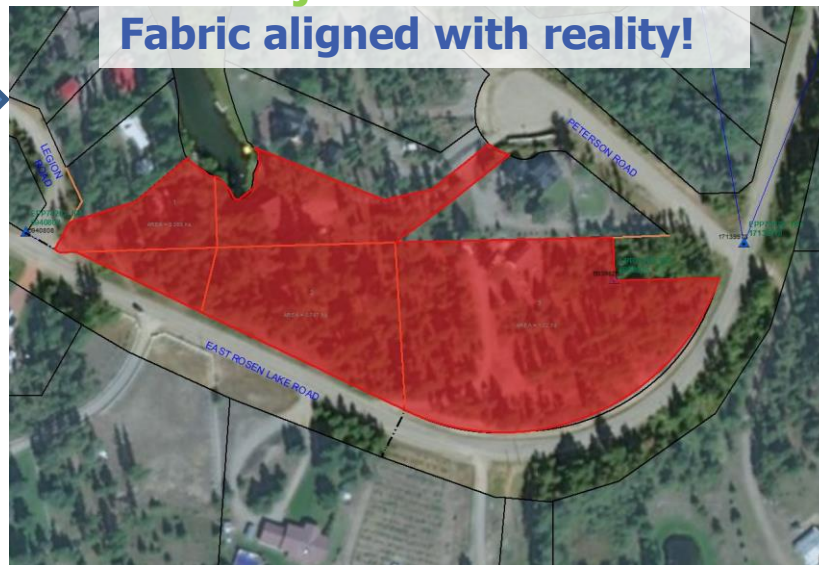


# Adjustability: Improving Absolute Positional Error

**Before Adjustment:** Serious misalignment between Parcel Fabric and real world



**After Adjustment:** Parcel Fabric aligned with reality!



Parcel boundaries match features on the ground

Coordinates of Parcel corners from the fabric could be used to locate survey evidence in the field!



# Considerations and Impact

1. Marked increase in operational productivity during the next Survey Plan Dataset Integration.
2. Significance productivity gain using custom developed tools in respect to cleaning up established and pre-existing data error.
3. Flags error for clean-up that may otherwise be ignored or dismissed.
4. Frees the Technicians mind from the repetitive task of cleaning data error prior to data integration leaving the focus on establishing an adjustable network of parcels.
5. Spatial reporting on fabric health and adjustability.
6. Power comes at a cost...

# Questions?

# Follow-up AWG #9: Data Alignment with ParcelMap BC

## Update & Discussion on:

### Data Alignment with ParcelMap BC

1. Actions Underway / Plans for the Coming Months
2. Call for Participation in Data Alignment Sub-Group

# Follow-up AWG #9: Data Alignment with ParcelMap BC

## Actions Underway / Plans for the Coming Months:

LTSA contracting Esri Canada to develop the ParcelMap BC Data Alignment Workflow (DAW) package

- Documents Techniques, Workflows & needed Tools for ParcelMap BC ongoing and initial spatial alignment (July – September)
- Includes a Test Lab to validate the DAW package with select Adopters (targeted September or October)

LTSA & ICI Society developing higher level plan around Data Alignment

- Communications, DAW Rollout, Implementation Partners, etc...

# Follow-up AWG #9: Data Alignment with ParcelMap BC

## ParcelMap BC Data Alignment Workflow package:

Call for Participation:

- Data Alignment AWG Sub-Group: “*Team Alignment*”
- Data Alignment Workflow Test Lab: [Summary](#)

# ParcelMap BC Adopter Issues Log

## Introduction & Discussion on:

### ParcelMap BC Adopter Issues Log

1. Overview & Context
2. Triage into Challenges, Opportunities & Benefits
3. Impact & Priority Rankings
4. Collaboratively Tackling Challenges & Opportunities
5. Survey for Participants

# ParcelMap BC Adopter Issues Log

## Overview & Context:

[ParcelMap BC Adopter Issues Log](#) (BaseCamp) is maintained as an Excel workbook containing a regularly updated inventory of issues organised as follows:

<b>Issues</b>	Historical record of all Issues associated with ParcelMap BC Adoption that have been raised by Adopter organizations to date.
<b>Challenges</b>	Issues identified as Challenges faced by Adopter organizations constraining or delaying their ParcelMap BC Adoption.
<b>Opportunities</b>	Issues identified by Adopters as “business as usual” challenges with current parcel fabric which - if addressed - represent Opportunities to encourage ParcelMap BC Adoption.
<b>Benefits</b>	A list of inherent Benefits identified by Adopter organizations associated with the adoption of ParcelMap BC.

# ParcelMap BC Adopter Issues Log

## Triage into Challenges, Opportunities & Benefits:

**Issues** are gathered via the Adoption Working Group or other interactions with Adopters – ex. ICI Society 360LABS or other Outreach & Awareness activities

**Issues Log** is regularly updated & triaged by the AWG Facilitation Team

Issues added and/or Triageed by Issue Type

Ready one week before the next AWG Working Session

Regular Follow-ups / Updates during AWG Working Sessions

Issue Types
New
Challenge
Opportunity
Benefit
Retired



# ParcelMap BC Adopter Issues Log

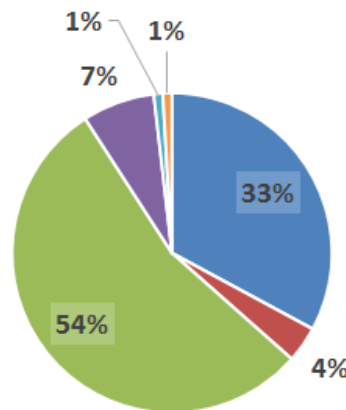
## Impact & Priority Rankings:

Challenges & Opportunities are ranked by **Status**, **Impact (by Group)** and **Priority**

Status
Verified
Assigned
In Progress
Complete
Resolved

Impact (Per Group)	
Low	Less than 33%
Medium	33-66%
High	More than 66%

Priority
Low
Medium
High



**ParcelMapBC**  
Adopters by Group

- (1A) Local Government: ICF to ParcelMap BC
- (1B) Province: ICF to ParcelMap BC
- (2) Local Government: Self Maintenance to ParcelMap BC
- (3) Parcel Consumers: ICIS Cadastre to ParcelMap BC
- (4) ICI Society: Internal Adoption
- (5) LTSA: Internal Adoption

# ParcelMap BC Adopter Issues Log

## Collaboratively Tackling Challenges & Opportunities:

Challenges & Opportunities are also assigned a:

**Lead:** The individual assigned overall responsibility for resolution of the Challenge / Opportunity. (*Must be an AWG Facilitator or Participant!*)

**Team:** The team(s) assigned responsibility for resolution of the Challenge / Opportunity (*e.g. LTSA, ICI Society, Team Tempest, Vendor, etc...*)

# ParcelMap BC Adopter Issues Log

## GROUP HOMEWORK:


ParcelMap BC Adopter Issues Log: *Survey of Prioritization of Adopter Challenges & Opportunities* ([DRAFT](#))

Final survey: June 24<sup>th</sup>

Completed surveys: July 18<sup>th</sup>

### ParcelMap BC Adopter Issues Log

Survey of Prioritization of Adoption Working Group Challenges & Opportunities

\* 1. Please enter your contact details. 

Name

Company

\* 2. Do you agree with the AWG facilitation team's priority ranking of the ParcelMap BC [Adopter Issues Log Challenges](#) posted in Basecamp? 

# Future Workshops

## Workshop #11 Date & Logistics

Wednesday September 18<sup>th</sup> – 10:30a - 2:30p (In-Person)

Other than follow-ups -- What should we focus on?

## Subsequent Workshop Dates

Continue the pattern?

Wednesday October 16<sup>th</sup> – 10:00a - 12:00p (Web Conference)

Wednesday November 20<sup>th</sup> – 10:30a - 2:30p (In-Person)...

# Wrap-Up

Group Feedback?

Open Questions?

Next Steps...

**Have a Wonderful Summer!**